

History of Costume and Styles I
Vocabulary Outlines

THE 331
L. M. Lowell

MESOPOTAMIA

I. Sumerians

II. Babylonians

III. Assyrians

IV. Basic Clothing forms

- Fibula
- Skirts
- Loincloth
- Tunics
- Veils

V. Social Structure

- A. Classes
- B. Families

VI. Fabrics and Resources

VII. Early Sumerians (3500-2500BC)

- Pagne
- Kaunakes
- Belts
- Cloaks
- Chignon
- Fillet

VIII. Later Sumerians/Babylonians (2500-1000BC)

- Purpura mollusk
- Draped Garment
- Beards

IX. Later Babylonians/Assyrians (1000-600BC)

- Tunic
- Fex/Tarbush-like hat
- Lappets



EGYPTIANS (3000-300BC)

I. Natural Resources

- A. Cloth fibers
- B. Jewelry
 - Turquoise
 - Lapis lazuli

II. Social Structure

III. Religion

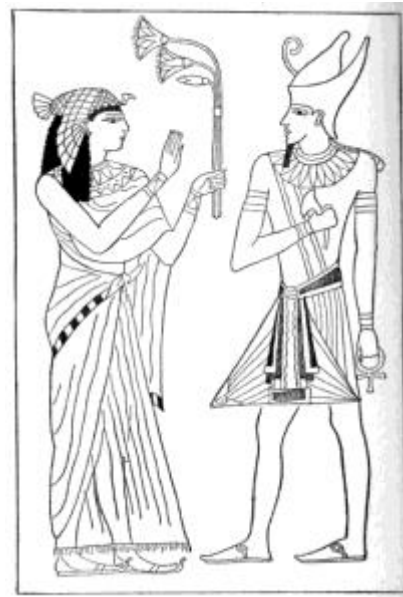
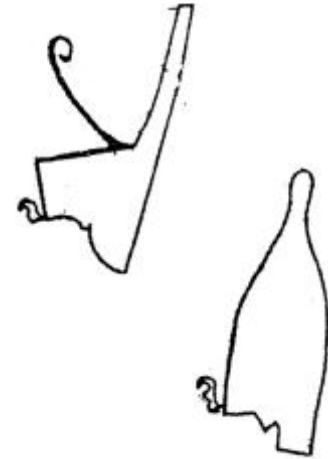
- Scareb
- Uraeus
- Eye of Horus

III. Important Egyptian Eras

- A. Old Kingdom
- B. Middle Kingdom
- C. New Kingdom

IV. Costume

- Loincloth
- Schenti
- Aprons
- Calasiris
- V-Necked Dress
- Bead-Net Dress
- Postiche
- Procardium/Sheath
- Diadems/Fillets
- Pectorals
- Nemes Headdress
- Atef Crown
- Red Wicker Crown
- Flat Crown
- Pschent Crown
- Falcon/Vulture Headdress
- Kohl
- Malachite
- Henna
- Red Ochre
- Collars
- Wigs
- Corselet
- Unguents



Costume History

Lecture 3

Lowell

I. AEGEANS-Minoans and Mycenaean

A. Background

1. Location
2. Characteristics of their culture

B. Costume

fitted bodice
bell shaped skirt
tiered/flounced
apron
pearls
turban
phallustache
lapis lazuli
amethyst
granulation
filigree
saffron
shellfish



II. Ancient Greece

A. Dominant Periods

1. Archaic. 800-500 bc
2. Classical. 500-323 bc
3. Hellenistic. 323-146 bc

B. Religion

C. Social Structure

1. Adult men-citizens
2. Their wives and children
3. Resident Foreigners
4. Slave

D. Natural and Imported Resources

E. General Characteristics of Each Period

Costume History
Outline 4

GREEK CLOTHING

Basic Garments & Accessories

perizoma

chiton

2 versions, and at least 2 variations

guilloche, fret, vines

fibula

Ionic chiton

Doric peplos

Doric chiton

Exomis

Hellenistic chiton

girdling

peplum

himation

chlamys

diplox

chlamydon

fillets

petasos

pilos

sakkos

sphendone

Stephan

tholia

phrygian bonnet

pilos

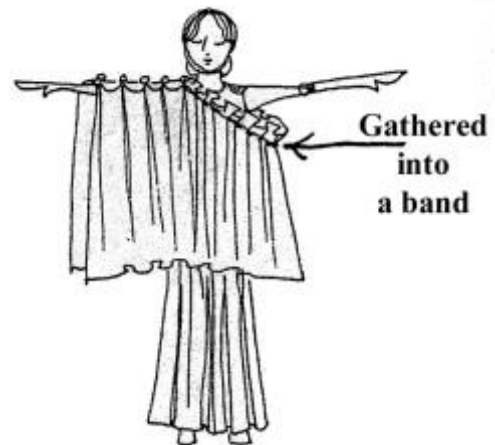
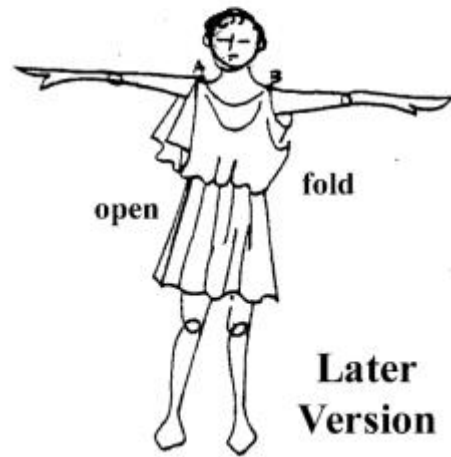
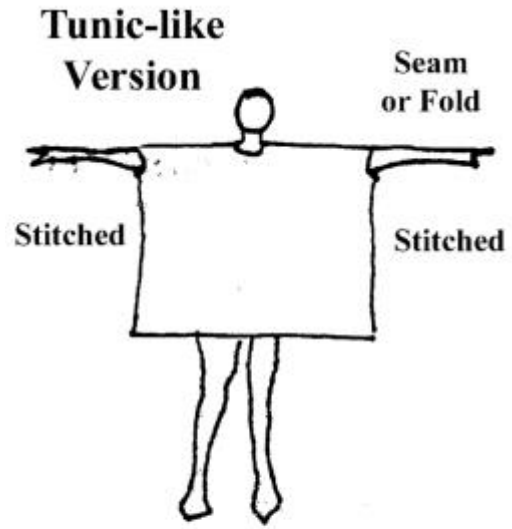
Hercules knot

nymphides

chlanis

greaves

cuirass

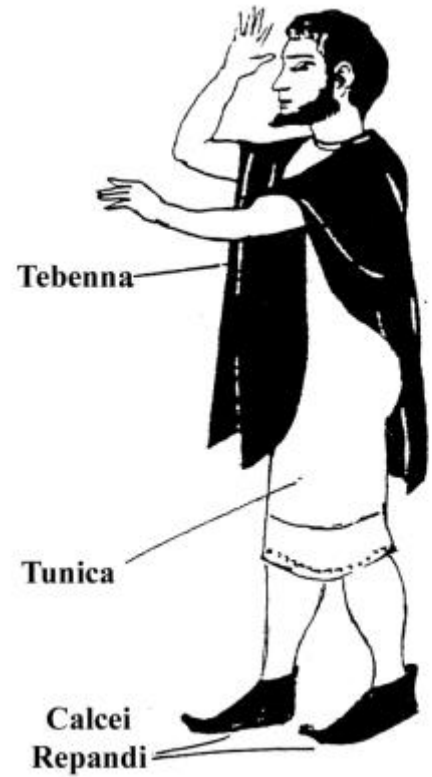


Costume History

ETRUSCANS (800-200bc)

- I. Background
 - A. Location
 - B. Social Structure
 - C. Natural Resources
 - D. Characteristics
 - E. Technology
 - 1. Dentistry
 - 2. Gold and bronze work
 - 3. Shoe and sandal making
 - 4. textile production
 - a. fibers/fabrics
 - b. design/decorations

- II. Culture Contact
- Costume
 - perizoma
 - tunica
 - chitoniskos
 - kolobius-colobium
 - calcei repandi
 - tebenna
 - Greek Costume (himation, chlamys)
 - tunicas
 - Chitons (Doric Peplos, Ionic Doric)
 - tutulus
 - jewelry (fibula, bulla, diadem)
 - badge of status



Costume History

Lowell

Outline 6

ROMANS

- I. Historical Background
 - A. Arts and clothing were adaptations of Greek and Etruscan
 - B. Major Periods
 1. Republic: 509-31b.c
 2. Empire: 31b.c.-476 a.d.
 - a. pax romana
 - b. Empire division
 - C. Characteristics of Roman Life
 - D. Social Structure

pater familias

 1. Patricians-aristocrats, rulers, born from important Roman families
 2. Plebians-majority of the Roman population
 3. Slaves
 4. Foreigners
 - E. Textiles
 1. wool
 2. flax → linen
 3. silk
 4. cotton



Costume History
Lowell
Outline 7

ROMANS

I. Costume

- subligar
- subucula
- tunica
- clavi
- toga
- toga viriles/toga pura
- toga praetexta
- sinus
- umbo
- solae/sandalis
- soccus
- subligaria
- strophium
- stola
- palla
- vitta
- handkerchiefs
 - orarium
 - sudarium
 - mappa
- tutulus
- rincinium
- paenula
- lacerna
- birrus/burrus
- palludamentum



Toga



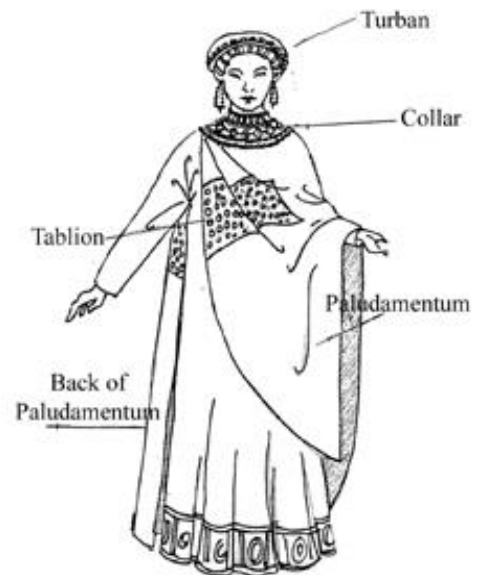
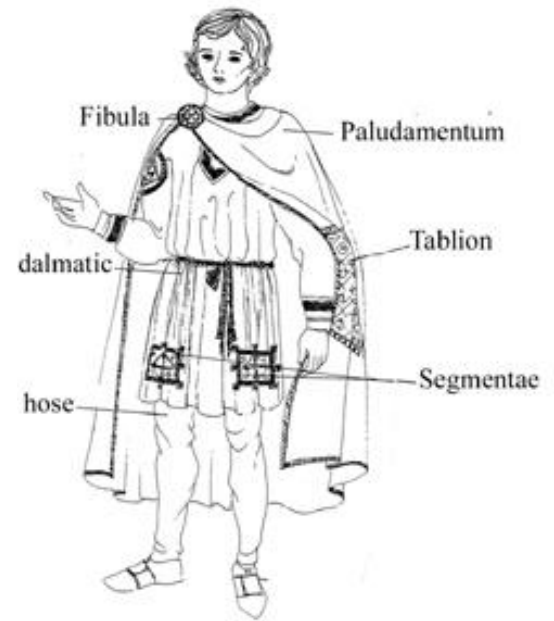
Costume History

Outline 9

Lowell

BYZANTINE (Begins the Middle Ages)

- I. Background
 - A. Eastern Roman Empire
 - 1. Constantinople (not Istanbul)
 - 2. Strategic location
 - B. Christianity
 - C. Justinian and Theodora
 - D. Expertise
 - E. Textiles
 - linen and wool
 - silk (samite)
 - The Book of Prefect
 - decoration: embroidery, applique, precious stones
 - F. Decline
- II. Costume
 - A. General characteristics
 - B. Men and Women
 - tunics
 - dalmatics
 - roundels
 - segmentae
 - paludamentum
 - tablion
 - characteristic Byzantine haircut
 - hose
 - pallium/lorum
 - chasuble
 - palla
 - turbans
 - mappula
 - pomegranate juice



Costume History

Lowell

Outline 8

DARK AGES

WESTERN EUROPE FROM THE FALL OF THE ROMAN EMPIRE TO 900AD

- III. Reasons for the name- Dark Ages
 - G. Depopulation
 - H. Poverty
 - I. Isolation
- IV. Evidence of Costume
 - 3. Written records
 - 4. Religious art
- V. Major Kingdoms
 - C. Merovingian
 - D. Carolingian-Charlemagne (800-814)
- VI. Costume
 - Roman-tunic, palla, and chlamys
 - Germanic-bifurcated garments (braies)+fur garments
 - paenula
 - braies
 - pedules
 - hose
 - cross-gartering



QUESTIONS TO ANSWER FROM THE TEXT

1. What was a gynaeceum?
2. What two fibers/fabrics were used for upper class garments?
3. Why did Clovis, the 1st King of the Merovingians adopt Byzantine costume?
4. Contemporary comments on p.100 indicate that Charlemagne wore the national dress of the Franks. What did this dress include?



Costume History

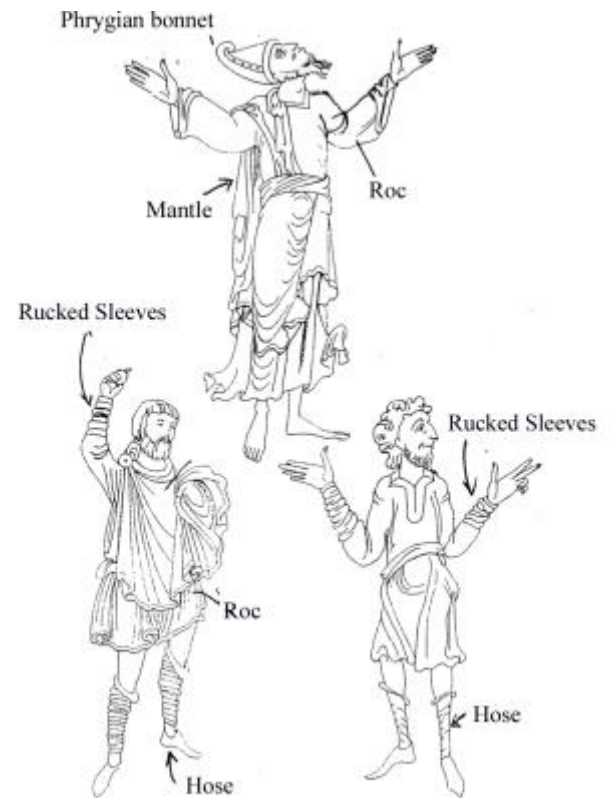
Lowell

Outline 10

ROMANESQUE: 10th-12th Centuries

- I. Death of Charlemagne
 - A. Feudalism
 - vassals, serfs, fief
 - B. Otto I in 962a.d.-German Roman Empire
 - C. Anglo Saxons in Britain, Alfred the Great, then in 1066a.d. William the Conqueror
 - 1. Battle of Hastings-depicted in the Bayeaux Tapestry
- II. Economic, political, and social events and clothing
 - A. The Crusades
 - 1. Fiber-Cotton
 - 2. Fabrics-
 - dimity
 - damask
 - muslin
 - B. Castles and Courts
 - C. Town life
 - 1. sumptuary laws
 - 2. merchant class
 - D. Fabric production
 - 1. from female to male
 - 2. Technology
 - a. water powered mills
 - b. horizontal loom
 - c. spinning wheel
 - 3. Cloth for export
 - a. guilds
 - b. wool from England
 - c. wool cloth produced in Flanders
 - d. linen
 - 4. Silk
 - 5. Cotton
- III. Costume
 - braies
 - open mantle
 - closed mantle
 - girdled
 - rucked sleeves
 - forked beards
 - bliaut

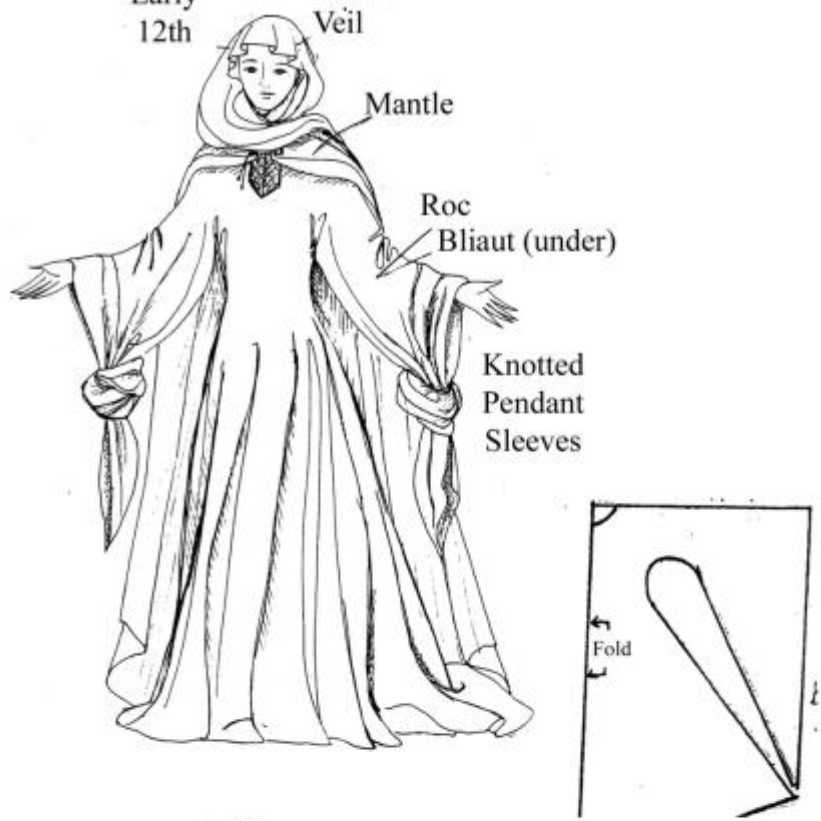
- roc
- hose
- chemises
- headrail
- fillet
- bliaut/bliaud
- circlet
- fillet
- barbette
- wimple
- pendent sleeve
- pelicon/pelice
- coif
- garnache
- herigaut
- tabard
- fitchets
- hoods
- chaperon



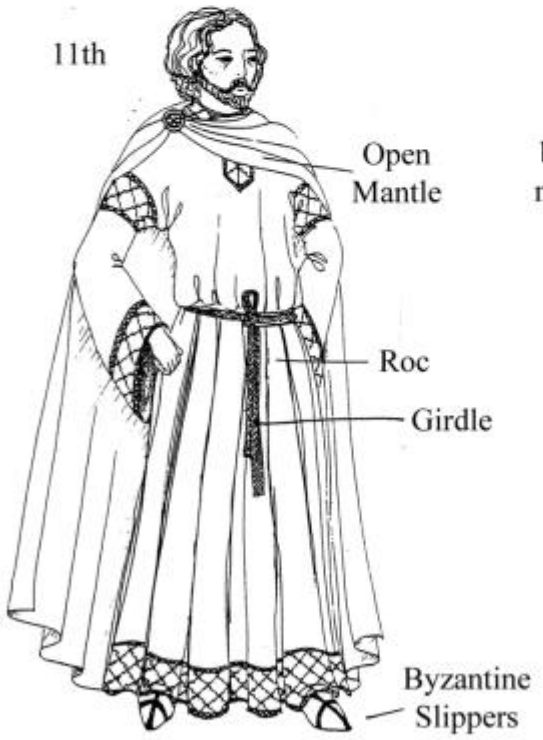
11th



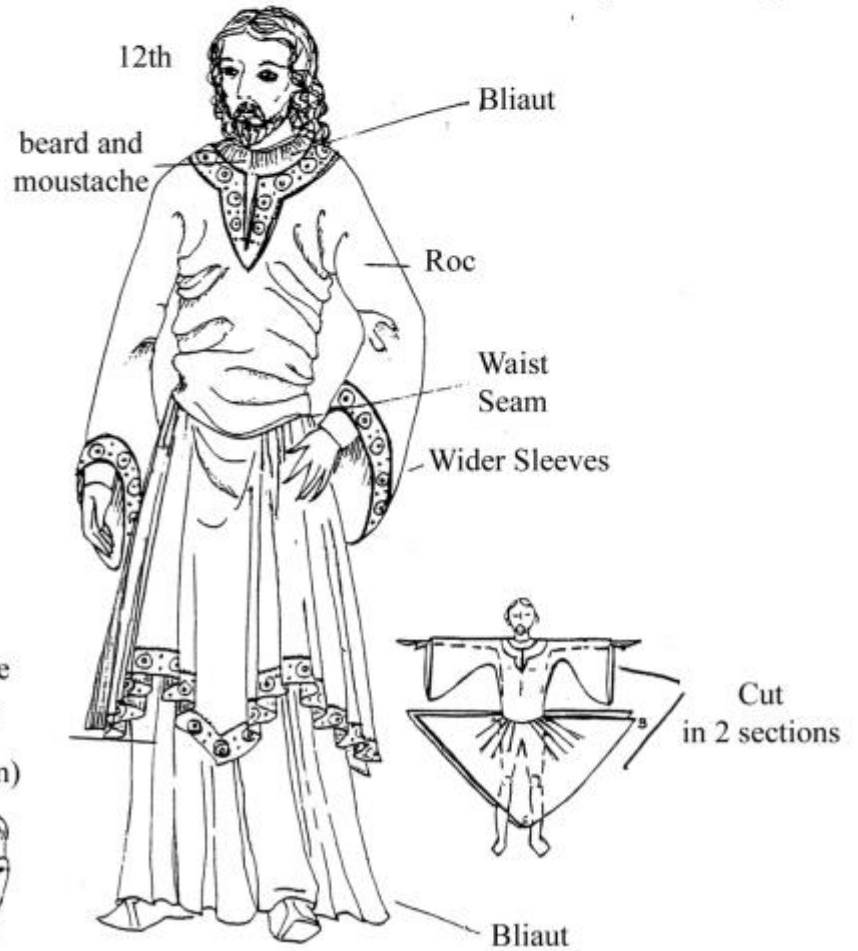
Early 12th



11th

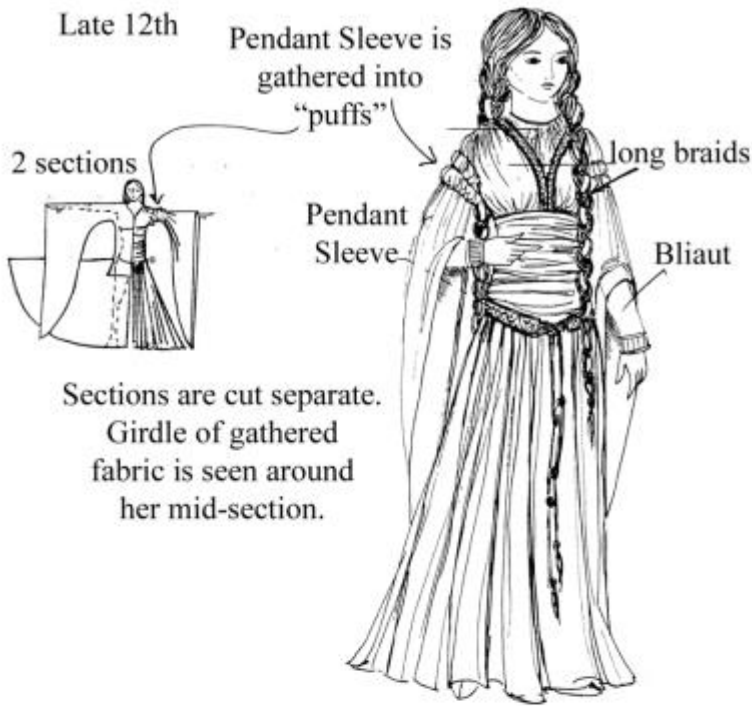


12th

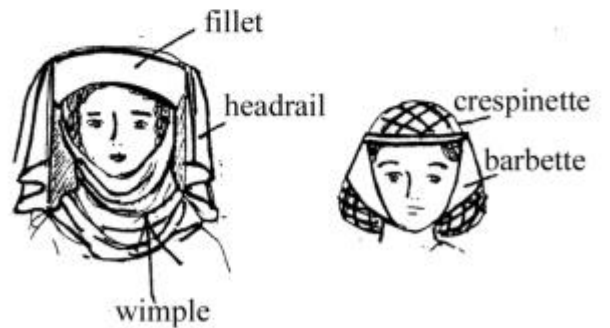
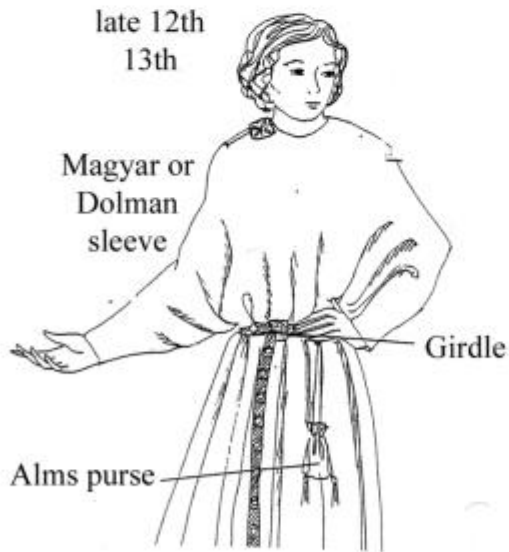
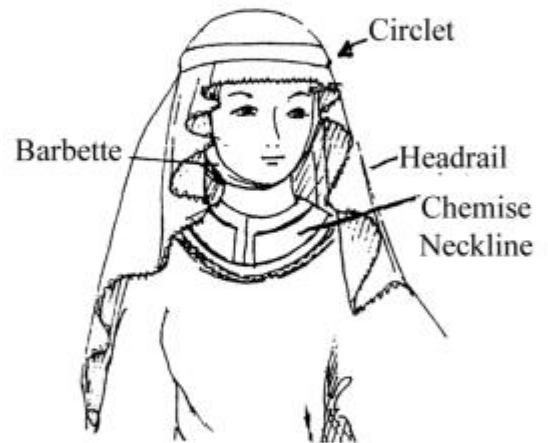


Coif (Men)





12th & 13th Headdress



Costume History
Outline 11
Lowell

LATE MIDDLE AGES-
13th & 14th Century-GOTHIC

Historical Background

- A. Centralized Governments
- B. Commerce & Trade
- C. Middle Class/bourgeoisie
- D. Urban versus Rural
- E. Plague/Black Death
- F. Renaissance in Italy
- G. Textile production
- H. Complexity in apparel development continues to increase: seaming, gussets
- I. Fashion Centers=Royal Courts
- J. Middle Class vs. the Nobles- Sumptuary Laws

Exaggerations in costume:

- heraldic devices
- dagging
- buttons
- liripipes
- tippets
- poulaines/crackows
- particolored

K. Costume

- pourpoint
- points
- laces
- chaperon
- cotehardie
- houppelande
- tubular
- pendant sleeves
- bagpipe sleeves
- coif
- “new” chaperon
- kirtle
- surcote/sideless gown
- plastron/placard
- fitchets
- brooches
- ram’s horn hairstyle

circlet
coteharddie
barbette
headrail/veil
crespinette
magyar/dolman sleeve
cote
surcote
liripipe
fermail/afiche

DEFINITIONS AND QUESTIONS TO ANSWER FROM YOUR TEXT FOR THE TEST

Houppelande a mi jambe

Houce

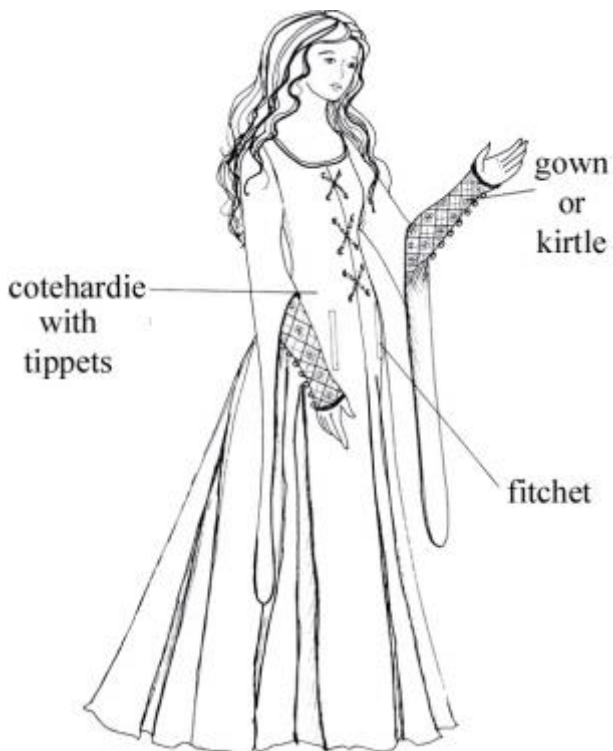
Corset

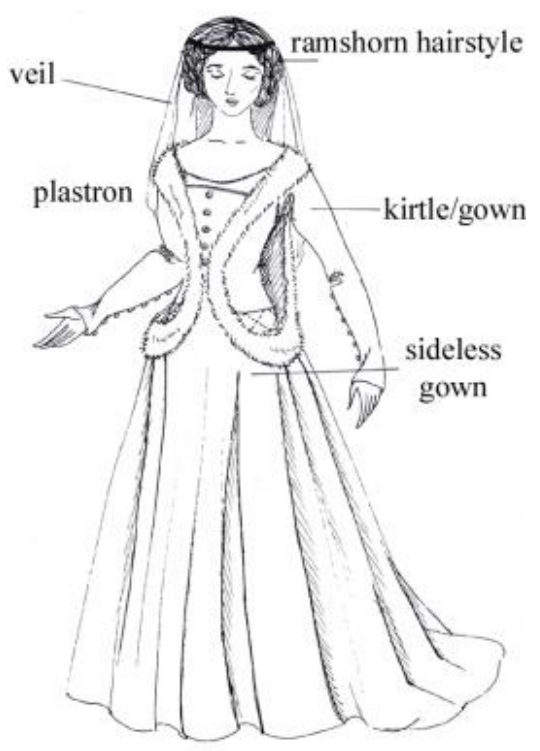
Livery

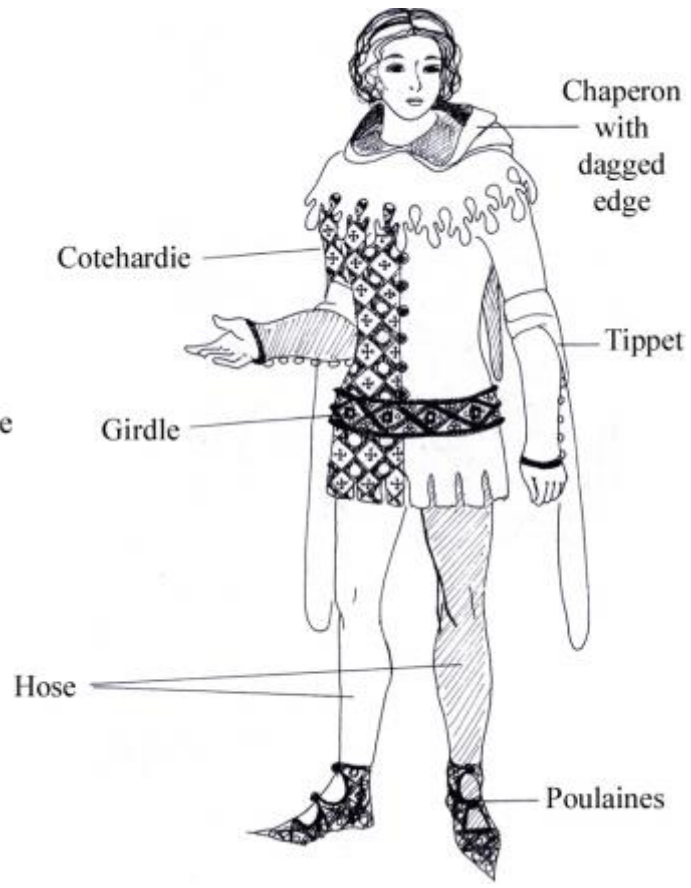
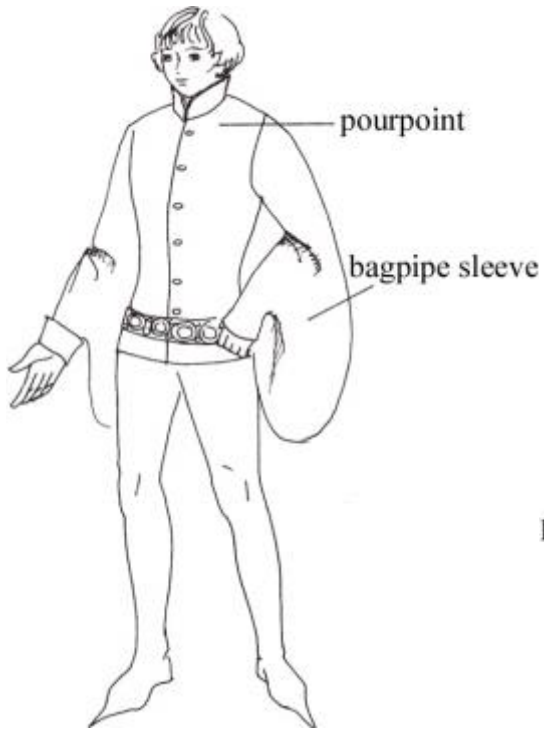
Lingerie

How did the Merchant class become more influential during the 14th Century?

What was the Court of Burgundy known for? Where was it located?





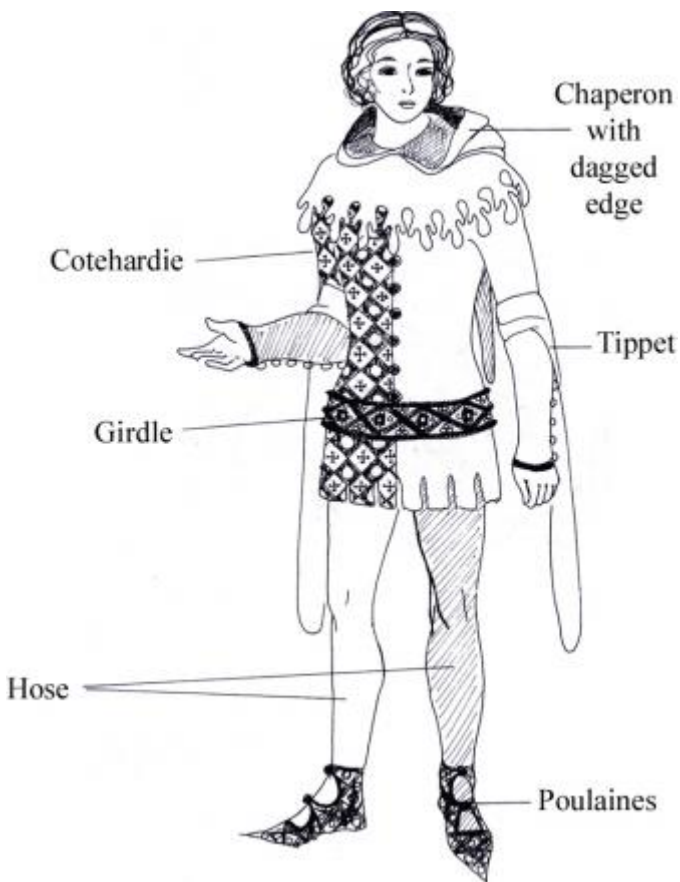
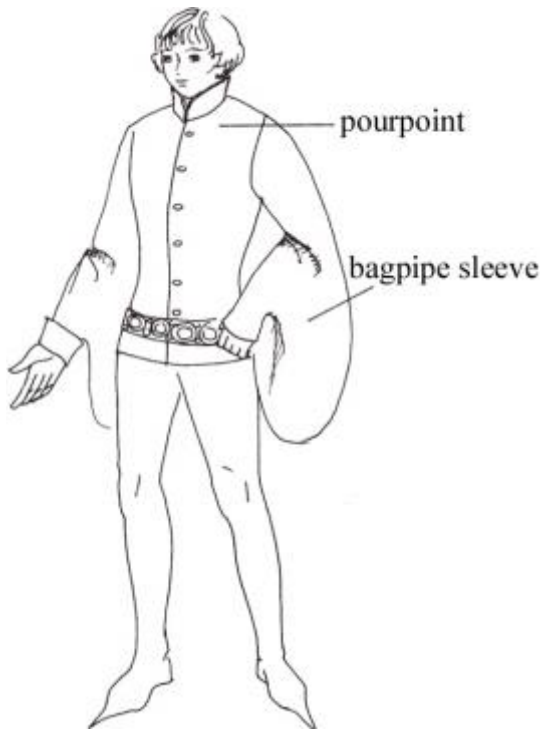


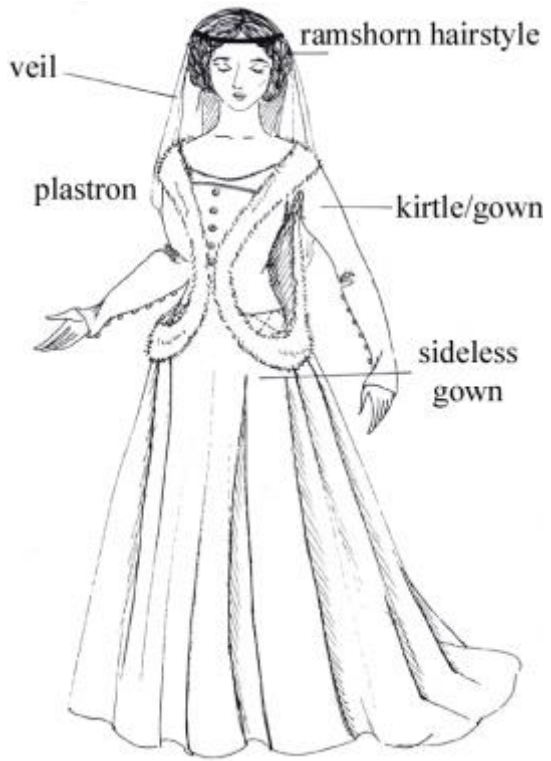
Costume History
Lowell
Outline 12

15th CENTURY-Late Gothic

Northern Europe.

houppelande
pendant
dagged
bagpipe
carcaille
chaperon with liripipe
new chaperon
parti-colored
doublet/pourpoint
bells
chemise/shirt
roundlet
bowl cut/pudding basin
piked shoes
mahoitres
pendant of the golden fleece
points
huque
pattens
ermine
italian influence





veil

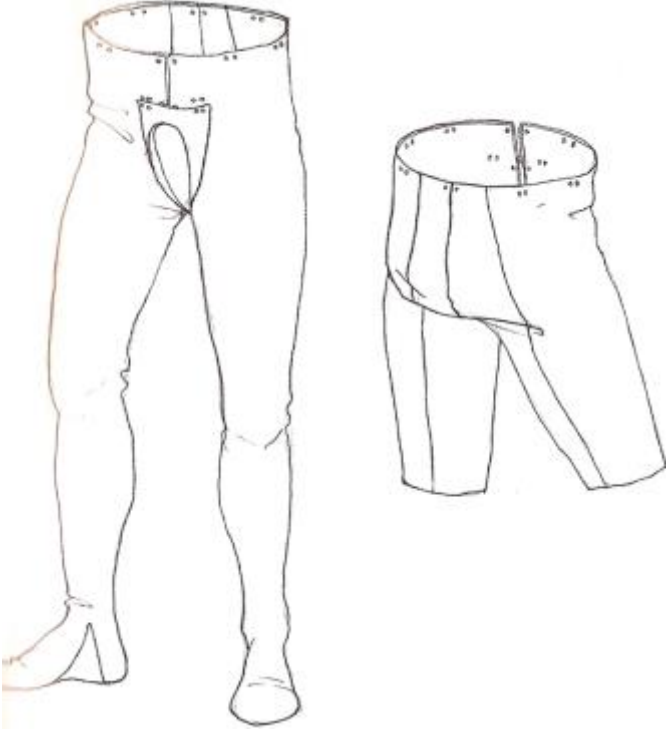
ramshorn hairstyle

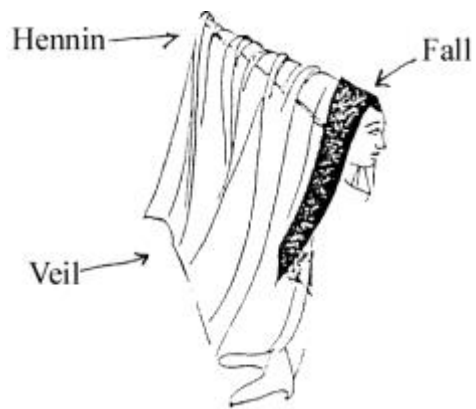
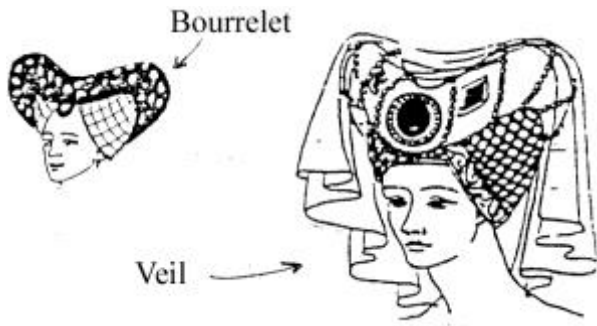
plastron

kirtle/gown

sideless gown

caul
horned
butterfly
bourelet
heart shaped
templers
abdominal pads
modesty piece
partlet
hennin/henin
ermine
frontlet
fall
truncated hennin
vertugale





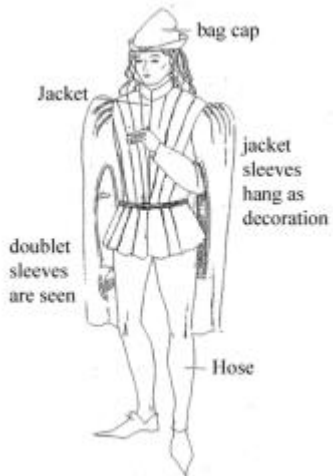
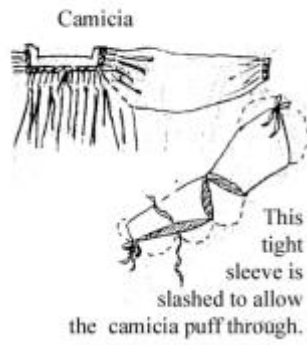
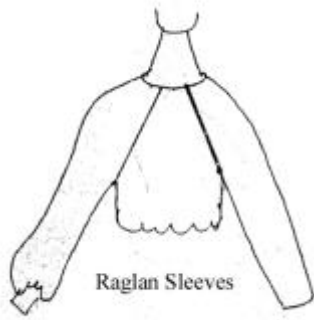
Horned Headdress with veil



Costume History
Outline 13
Lowell

ITALIAN RENAISSANCE-15th and 16th Centuries

- I. Renaissance Ideas
 - A. Influence of Greek and Roman artifacts
 - B. Italy's role in moving the western world out of the Middle Ages
 - C. Foundation of European structure as we know it
 - D. Important people and events
 - i. Shakespeare and Marlowe
 - ii. Columbus
 - iii. Copernicus
 - iv. Gutenberg
 - E. Social structure
 - i. Aristocracy
 - ii. Merchant class
 - iii. Skilled artisans and artists
 - iv. Peasants & laborers
 - F. Textiles
- II. 15th Century Costume
 - guardaroba
 - camicia
 - doublet
 - peplum
 - simar
 - raglan sleeve
 - gown/dress
 - overdress
 - juliette caps
 - ferroniere
- III. 16th Century Costume
 - black work
 - chopines
 - Spanish influence



Costume History
Lowell
Outline 14

NORTHERN RENAISSANCE: Tudor/Elizabethan

- I. Background Information
 - A. Protestant Reformation & Nationalism
 - 1. Germany
 - a. Martin Luther
 - 2. Spain
 - a. Charles V
 - b. Philip II
 - 3. England
 - a. Henry VII
 - b. Edward VI
 - c. Mary Tudor
 - d. Elizabeth I
 - 4. France
 - a. Francis I
 - b. Henry II & Catherine de Medici
 - B. Spread of Fashion Ideas
 - C. Textiles
 - D. Decoration
 - 1. black work- logwood
 - 2. lace

- II. Costume
 - A. Men
- 1500-1515
- drawers
 - shirts
 - jerkin
 - doublet
 - paltock
 - stomacher
 - jacket/jerkin
 - bases
 - robes/gowns

- 1515-1550
- paned
 - upper stocks/breeches
 - nether stocks
 - chamarre
 - bateau/boat neckline
 - codpiece

- 1550-1600
- ruff
 - pecadils
 - peascod belly
 - breeches/ trunk hose
 - venetians

melon hose
gallygaskins/slops
canions
bombast

B. Women

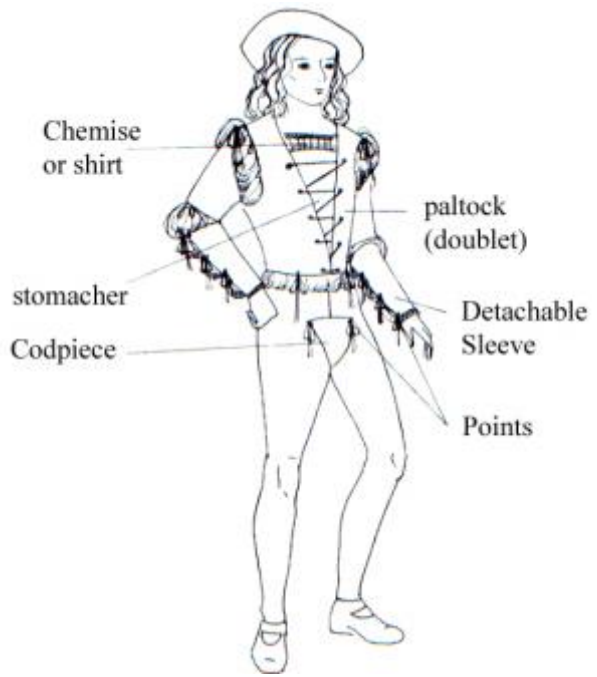
1500-1530
stays/pair of bodies
busk

1530-1575
verdugale/Spanish farthingale
petticoat

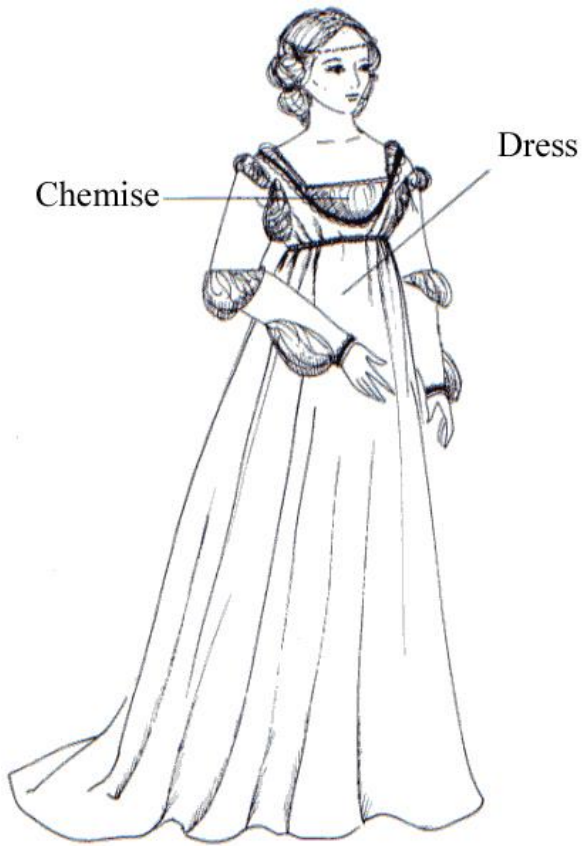
1575-1600
bum roll
wheel drum/French farthingale
ropa
leg of mutton sleeve
supportasse/underpropper
cartwheel ruffs
open ruffs/medici collars
conch

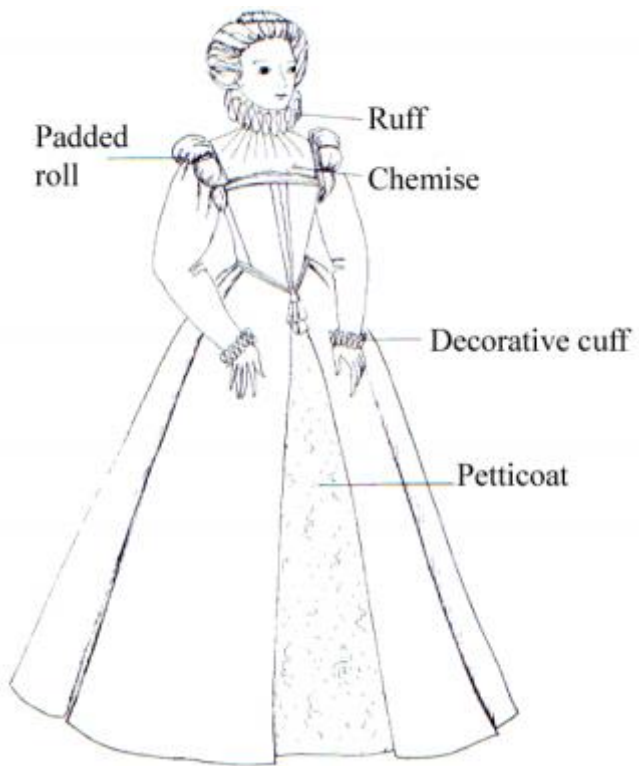
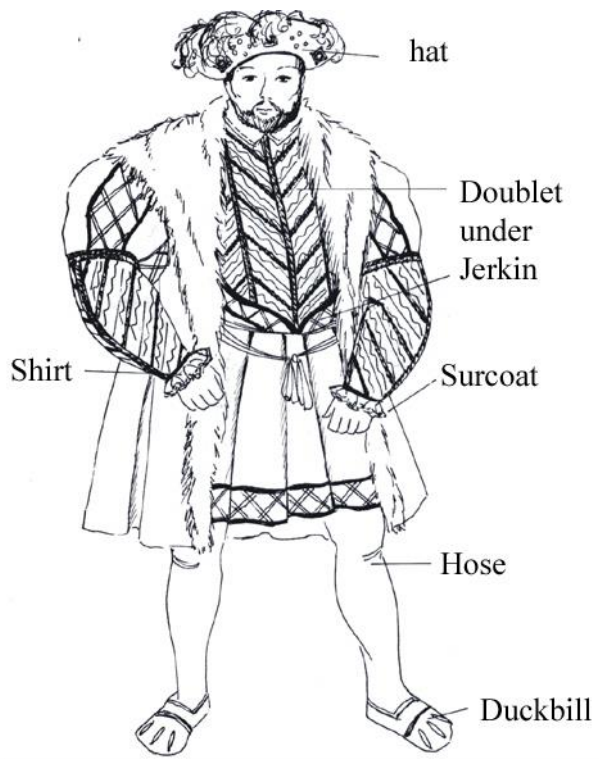
C. Accessories

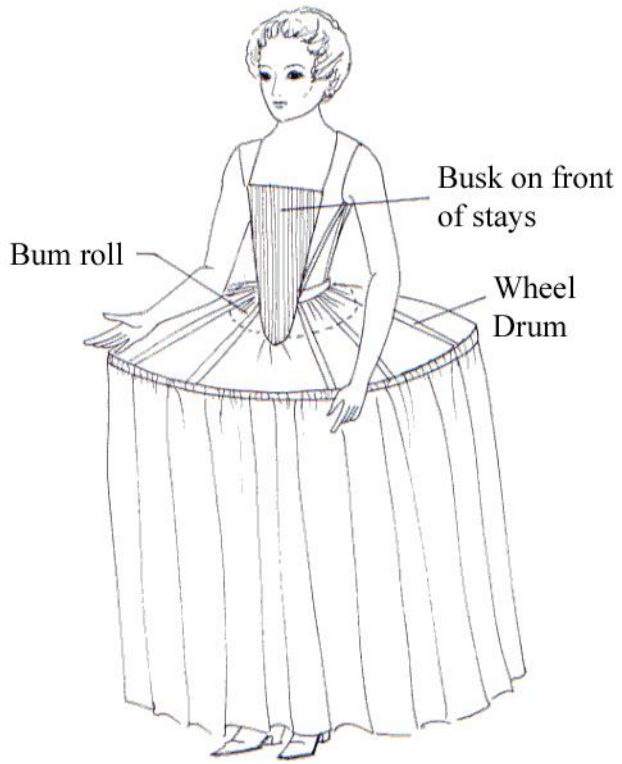
french bonnet
skull caps/coifs
capotain
gabled headdress
French hood
lappets
attifet



duckbills







Surcoat

Chamarre



Costume History

Lowell

Outline 15

BAROQUE: Cavalier vs. Puritans

Commonwealth & Restoration

whisk

falling band/falling ruff

slopps

Balagny cloaks

cassocks/casaques

love lock

straight soles

slap shoes

modeste

secret

basques

virago sleeves

dishabille

cravat

petticoat breeches/rhinegraves

canons/cannons

surtouts/justacorps

tricorne

jack boots

corset

fontage/commode

pantofles

fans

wigs

muffs

masks

pomander balls

patches

plumpers

capotains

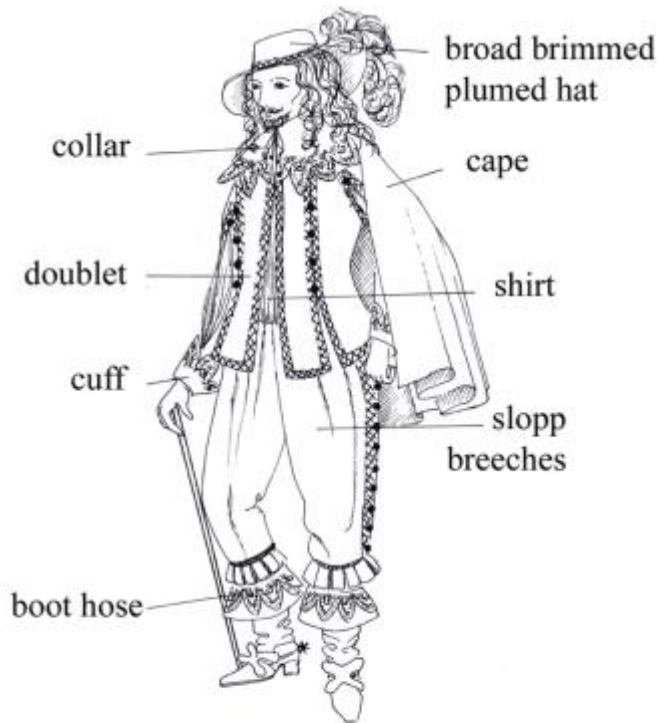
mantilla

guardinfante

mantua/manteau

fichu

boot hose



Early Commonwealth



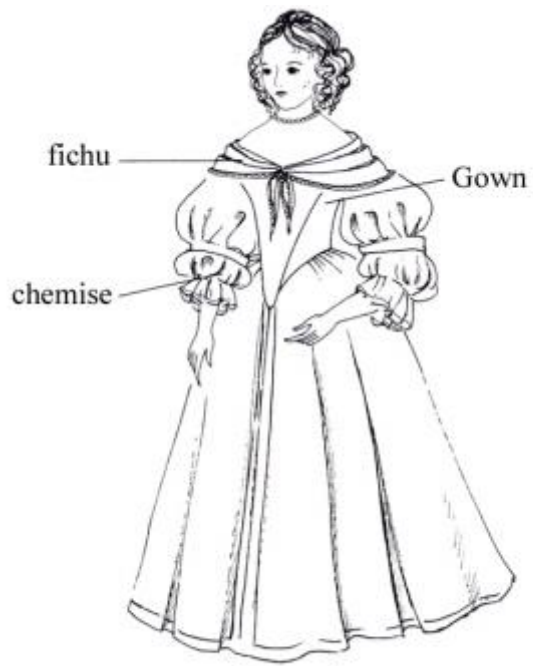
Commonwealth



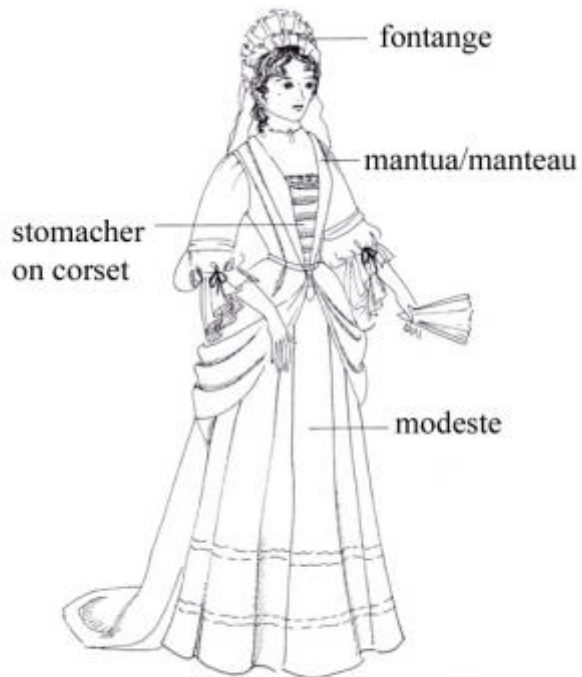
Restoration



Late 17th Century (post 1680)



Restoration



Late 17th Century (post 1680)

Costume History

Lowell

Outline 16

Eighteenth Century-Rococo/Georgian

Costume

Undress

Dress

Full dress

Powdering jacket

Half dress

Morning dress

Habit

Great coat

Beau/coxcomb/fop

Macaronis

Anglomania

redingotes

steinkirk

buckram

boot cuffs

frock coat

fall front

ditto suits

stocks

solitaire

banyan

full bottomed wig

toupee/foretop

queues

pigeon wings

club wig/catogan

bag wig

bob wig

natural wig

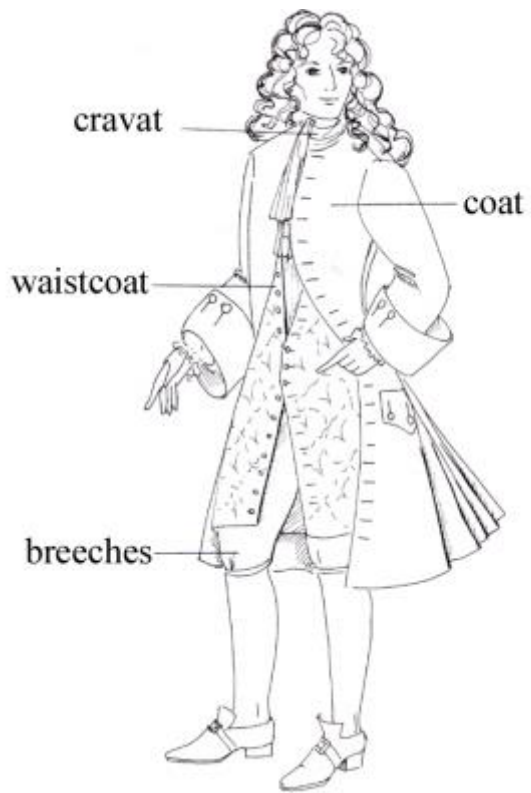
tricornes

bicornes

chapeau bras

clocking/clocks

spatterdashers/spats



Costume History

Lowell

Outline 17

Rococo Women-Eighteenth Century

paniers

under petticoat

jumps

hoops

sacque gown/robe battante/robe volante/innocente

pet-en-lair

puffers

mob caps

collarett

ellipse silhouette

robe a la Francaise

robe a la Anglaise

fichu

eschelles

engageants

caracao/casaquin

Bergere/shepardess hat

false rump

Polonaise

redingote dress

chemise a la reine

hedgehog

calashe

