

History of Costume and Styles I
Vocabulary Outlines

THE 331
L. M. Lowell

MESOPOTAMIA

I. Sumerians

II. Babylonians

III. Assyrians

IV. Basic Clothing forms

- Fibula
- Skirts
- Loincloth
- Tunics
- Veils

V. Social Structure

- A. Classes
- B. Families

VI. Fabrics and Resources

VII. Early Sumerians (3500-2500BC)

- Pagne
- Kaunakes
- Belts
- Cloaks
- Chignon
- Fillet

VIII. Later Sumerians/Babylonians (2500-1000BC)

- Purpura mollusk
- Draped Garment
- Beards

IX. Later Babylonians/Assyrians (1000-600BC)

- Tunic
- Fex/Tarbush-like hat
- Lappets



EGYPTIANS (3000-300BC)

I. Natural Resources

- A. Cloth fibers
- B. Jewelry
 - Turquoise
 - Lapis lazuli

II. Social Structure

III. Religion

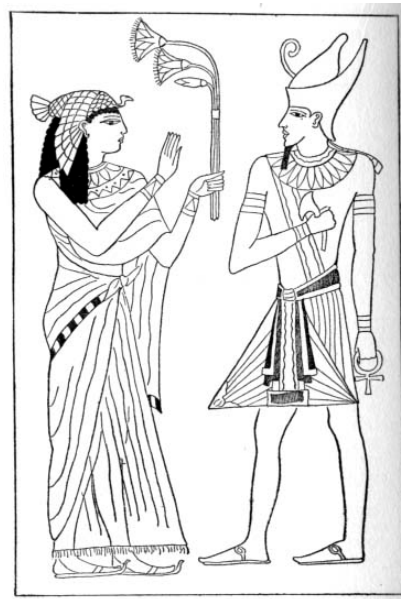
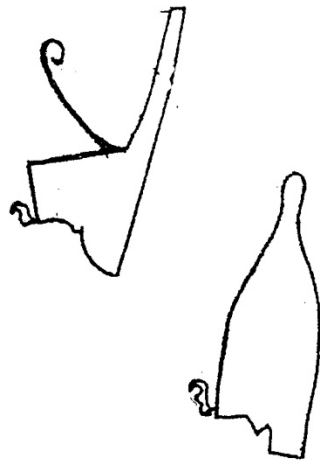
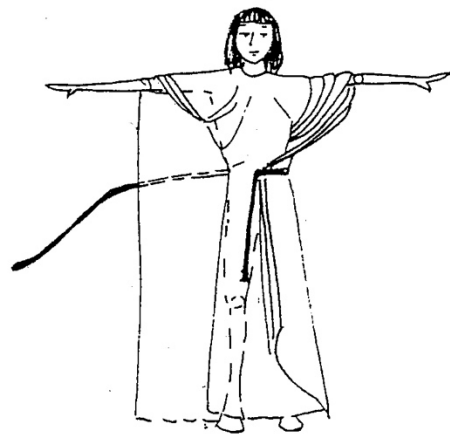
- Scareb
- Uraeus
- Eye of Horus

III. Important Egyptian Eras

- A. Old Kingdom
- B. Middle Kingdom
- C. New Kingdom

IV. Costume

- Loincloth
- Schenti
- Aprons
- Calasiris
- V-Necked Dress
- Bead-Net Dress
- Postiche
- Procardium/Sheath
- Diadems/Fillets
- Pectorals
- Nemes Headdress
- Atef Crown
- Red Wicker Crown
- Flat Crown
- Pschent Crown
- Falcon/Vulture Headdress
- Kohl
- Malachite
- Henna
- Red Ochre
- Collars
- Wigs
- Corselet
- Unguents



Costume History

Lecture 3

Lowell

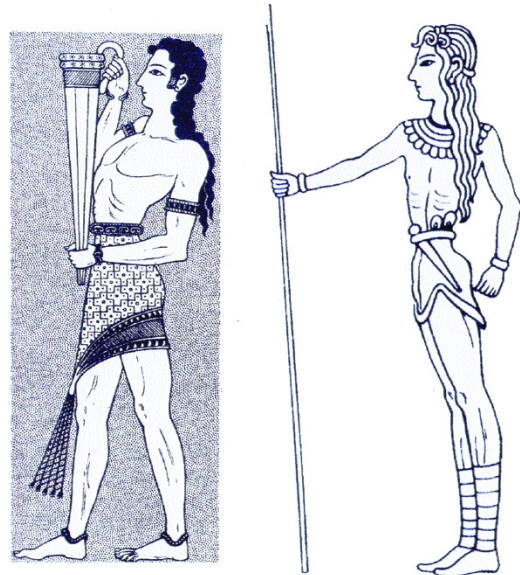
I. AEGEANS-Minoans and Mycenaean

A. Background

1. Location
2. Characteristics of their culture

B. Costume

fitted bodice
bell shaped skirt
tiered/flounced
apron
pearls
turban
phallustache
lapis lazuli
amethyst
granulation
filigree
saffron
shellfish



II. Ancient Greece

A. Dominant Periods

1. Archaic. 800-500 bc
2. Classical. 500-323 bc
3. Hellenistic. 323-146 bc

B. Religion

C. Social Structure

1. Adult men-citizens
2. Their wives and children
3. Resident Foreigners
4. Slave

D. Natural and Imported Resources

E. General Characteristics of Each Period

Costume History
Outline 4

GREEK CLOTHING

Basic Garments & Accessories

perizoma
chiton

2 versions, and at least 2 variations

guilloche, fret, vines

fibula

Ionic chiton

Doric peplos

Doric chiton

Exomis

Hellenistic chiton

girdling

peplum

himation

chlamys

diplax

chlamydon

fillets

petasos

pilos

sakkos

sphendone

Stephan

tholia

phrygian bonnet

pilos

Hercules knot

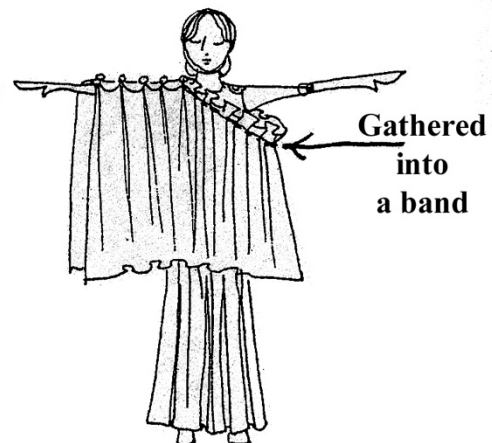
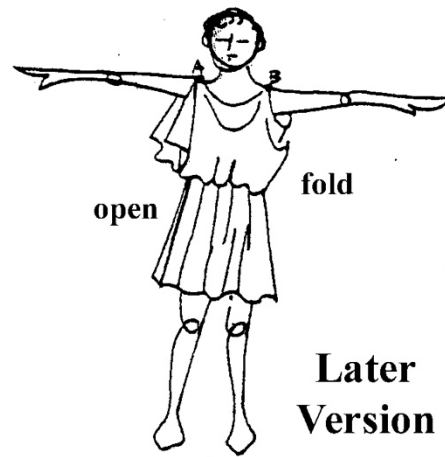
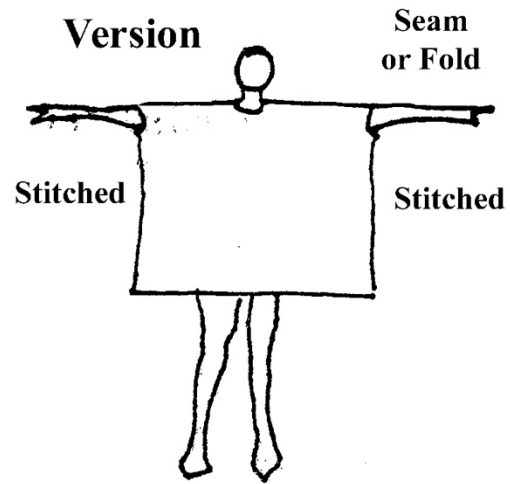
nymphides

chlanis

greaves

cuirass

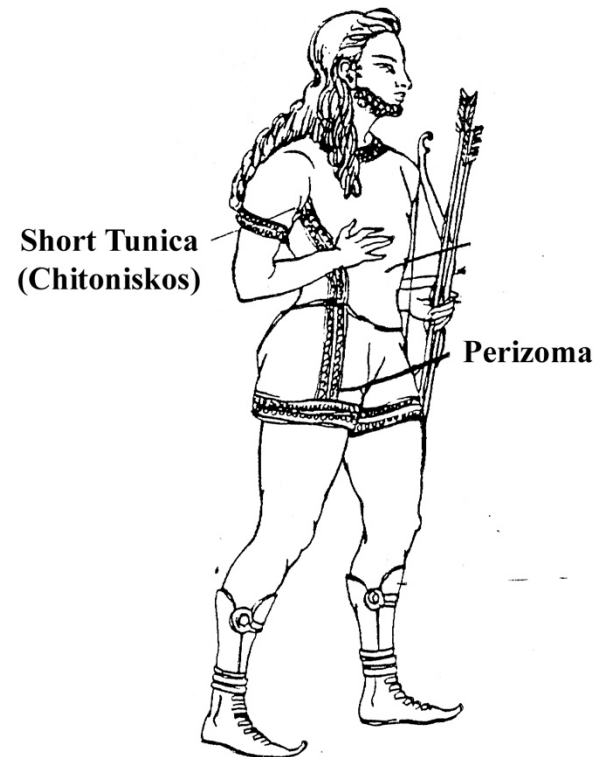
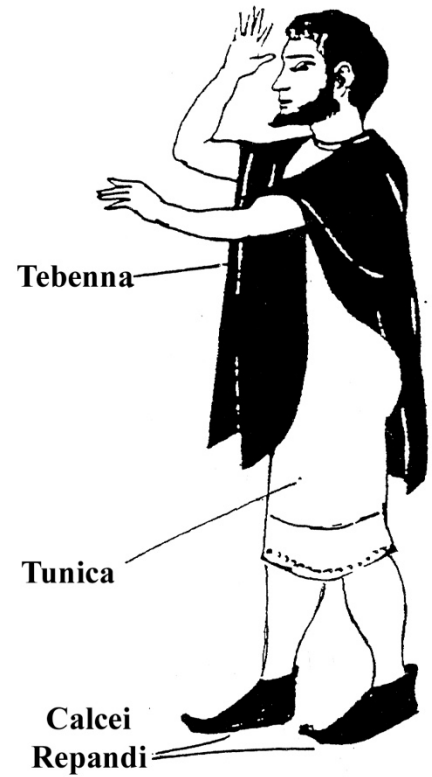
**Tunic-like
Version**



Costume History

ETRUSCANS (800-200bc)

- I. Background
 - A. Location
 - B. Social Structure
 - C. Natural Resources
 - D. Characteristics
 - E. Technology
 - 1. Dentistry
 - 2. Gold and bronze work
 - 3. Shoe and sandal making
 - 4. textile production
 - a. fibers/fabrics
 - b. design/decorations
 - F. Culture Contact
- II. Costume
 - perizoma
 - tunica
 - chitoniskos
 - kolobius-colobium
 - calcei repandi
 - tebenna
 - Greek Costume (himation, chlamys)
 - tunicas
 - Chitons (Doric Peplos, Ionic Doric)
 - tutulus
 - jewelry (fibula, bulla, diadem)
 - badge of status



Costume History

Lowell

Outline 6

ROMANS

- I. Historical Background
 - A. Arts and clothing were adaptations of Greek and Etruscan
 - B. Major Periods
 1. Republic: 509-31b.c
 2. Empire: 31b.c.-476 a.d.
 - a. pax romana
 - b. Empire divison
 - C. Characteristics of Roman Life
 - D. Social Structure

pater familias

 1. Patricians-aristocrats, rulers, born from important Roman families
 2. Plebians-majority of the Roman population
 3. Slaves
 4. Foreigners
 - E. Textiles
 1. wool
 2. flax → linen
 3. silk
 4. cotton

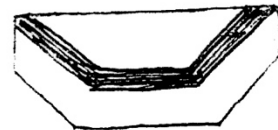


Costume History
Lowell
Outline 7

ROMANS

I. Costume

- subligar
- subucula
- tunica
- clavi
- toga
- toga viriles/toga pura
- toga praetexta
- sinus
- umbo
- solae/sandalis
- soccus
- subligaria
- strophium
- stola
- palla
- vitta
- handkerchiefs
 - orarium
 - sudarium
 - mappa
- tutulus
- rincinium
- paenula
- lacerna
- birrus/burrus
- palludamentum



Toga



Costume History

Outline 9

Lowell

BYZANTINE (Begins the Middle Ages)

I. Background

A. Eastern Roman Empire

1. Constantinople (not Istanbul)
2. Strategic location

B. Christianity

C. Justinian and Theodora

D. Expertise

E. Textiles

linen and wool

silk (samite)

The Book of Prefect

decoration: embroidery, applique,
precious stones

F. Decline

II. Costume

A. General characteristics

B. Men and Women

tunics

dalmatics

roundels

segmentae

paludamentum

tablion

characteristic Byzantine haircut

hose

pallium/lorum

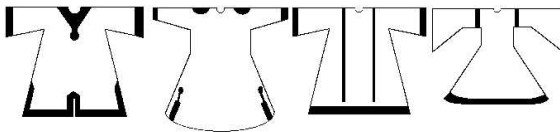
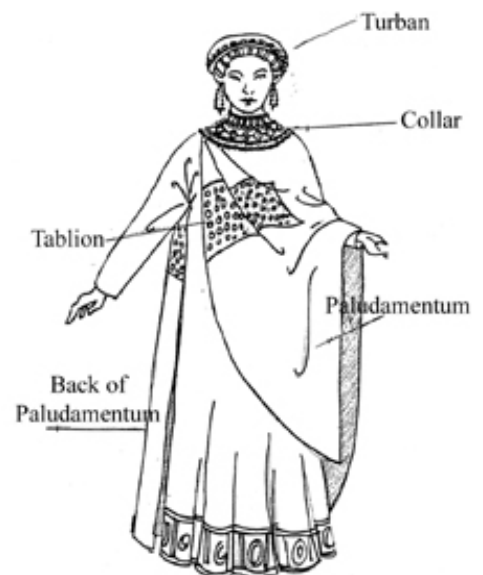
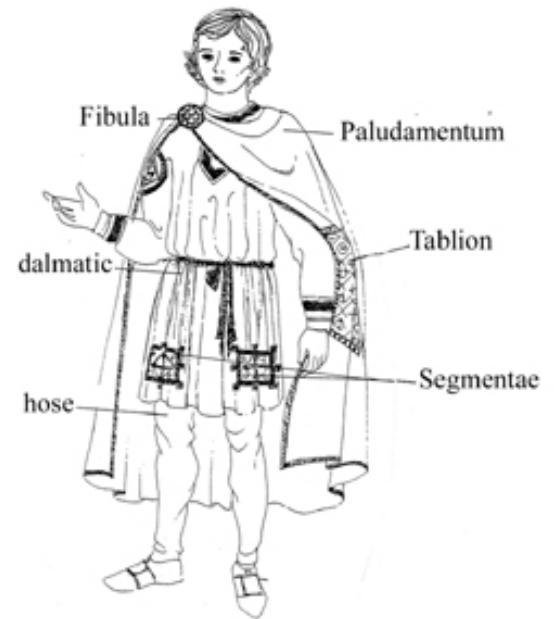
chasuble

palla

turbans

mappula

pomegranate juice



Costume History

Lowell

Outline 8

DARK AGES

WESTERN EUROPE FROM THE FALL OF THE ROMAN EMPIRE TO 900AD

- III. Reasons for the name- Dark Ages
 - G. Depopulation
 - H. Poverty
 - I. Isolation
- IV. Evidence of Costume
 - 3. Written records
 - 4. Religious art
- V. Major Kingdoms
 - C. Merovingian
 - D. Carolingian-Charlemagne (800-814)
- VI. Costume
 - Roman-tunic, palla, and chlamys
 - Germanic-bifurcated garments (braies)+fur garments
 - paenula
 - braies
 - pedules
 - hose
 - cross-gartering



FIG. 1. A. (continued) The early medieval period. The man in the illustration is wearing a Roman tunic, a palla, and a chlamys. The Germanic bifurcated garments (braies) and fur garments (paenula) are also shown. The man is wearing a headband and holding a long, thin staff or rod.



Costume History

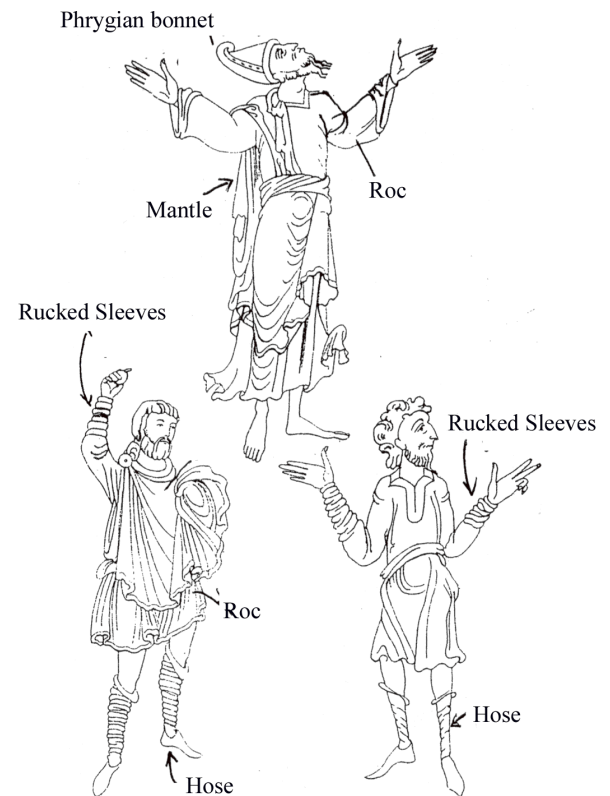
Lowell

Outline 10

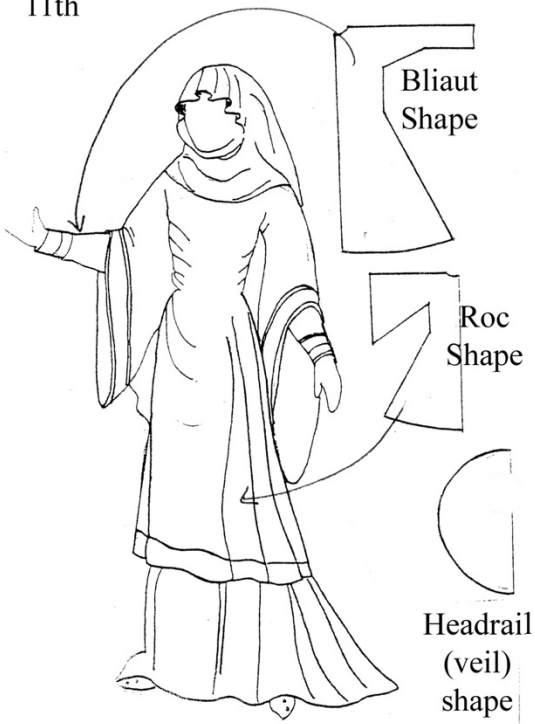
ROMANESQUE: 10th-12th Centuries

- I. Death of Charlemagne
 - A. Feudalism
 - vassals, serfs, fief
 - B. Otto I in 962a.d.-German Roman Empire
 - C. Anglo Saxons in Britain, Alfred the Great, then in 1066a.d. William the Conqueror
 - 1. Battle of Hastings-depicted in the Bayeaux Tapestry
- II. Economic, political, and social events and clothing
 - A. The Crusades
 - 1. Fiber-Cotton
 - 2. Fabrics-
 - dimity
 - damask
 - muslin
 - B. Castles and Courts
 - C. Town life
 - 1. sumptuary laws
 - 2. merchant class
 - D. Fabric production
 - 1. from female to male
 - 2. Technology
 - a. water powered mills
 - b. horizontal loom
 - c. spinning wheel
 - 3. Cloth for export
 - a. guilds
 - b. wool from England
 - c. wool cloth produced in Flanders
 - d. linen
 - 4. Silk
 - 5. Cotton
- III. Costume
 - braies
 - open mantle
 - closed mantle
 - girdled
 - rucked sleeves
 - forked beards

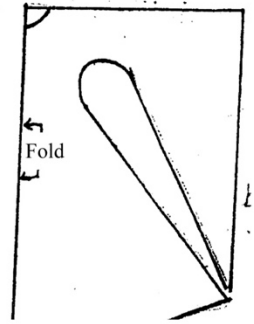
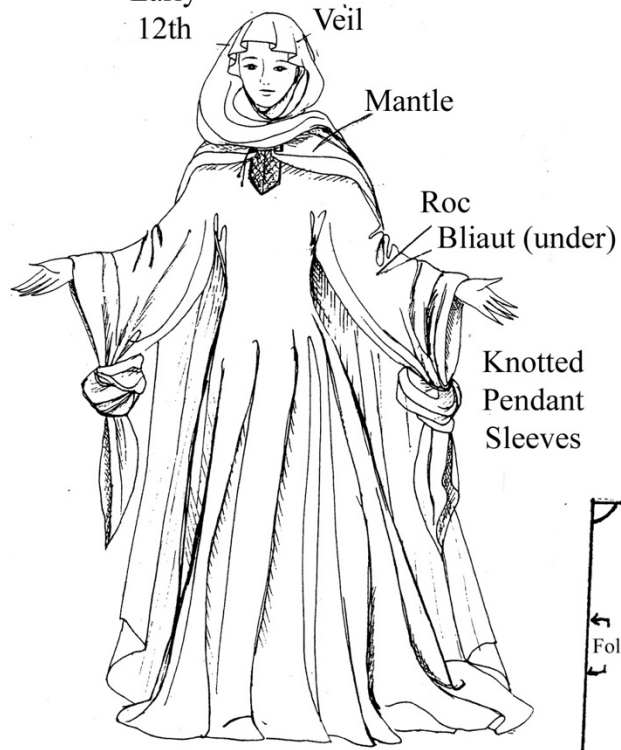
roc
hose
chemises
headrail
fillet
bliaut/bliaud
circlet
fillet
barbette
wimple
pendent sleeve
pelicon/pelice
coif
garnache
herigaut
tabard
fitchets
hoods
chaperon



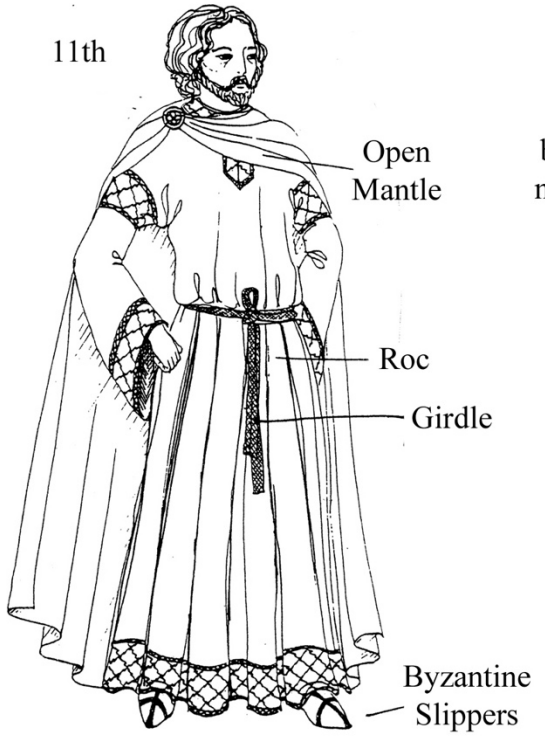
11th



Early 12th



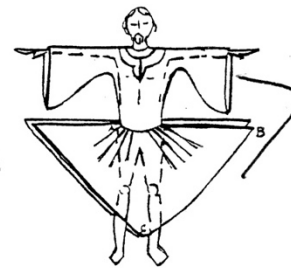
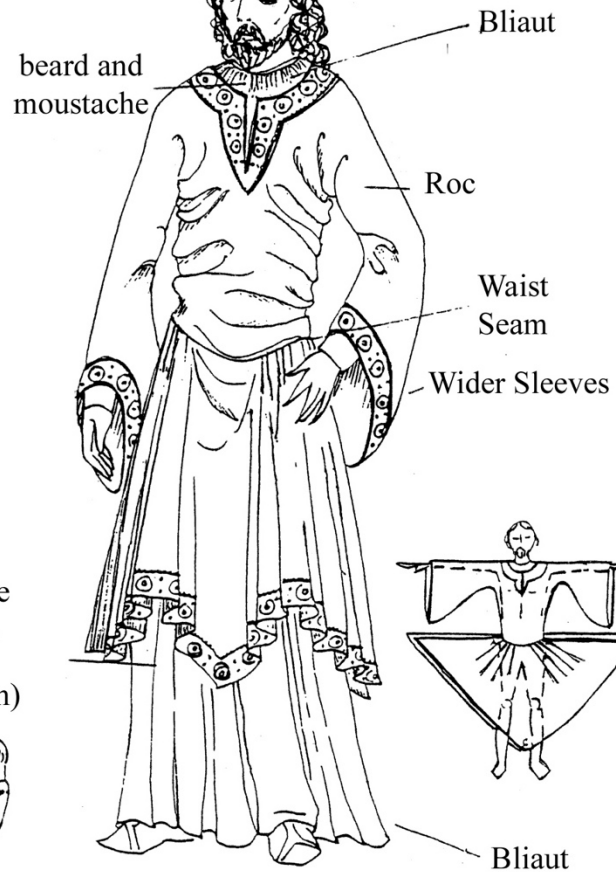
11th



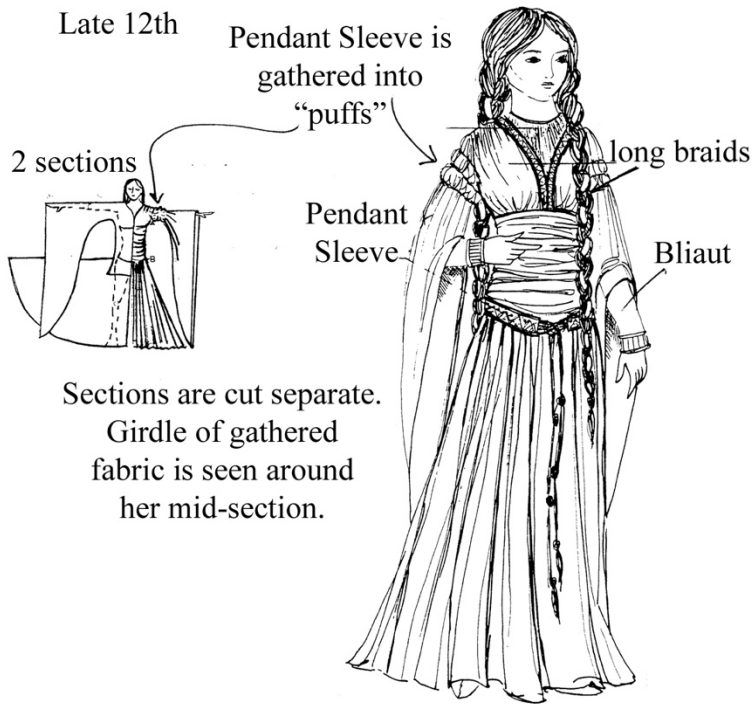
Coif (Men)



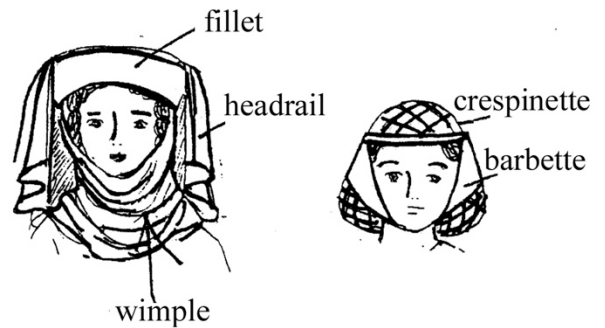
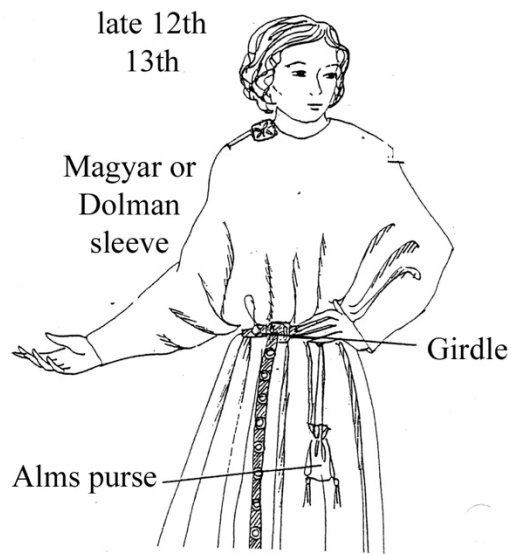
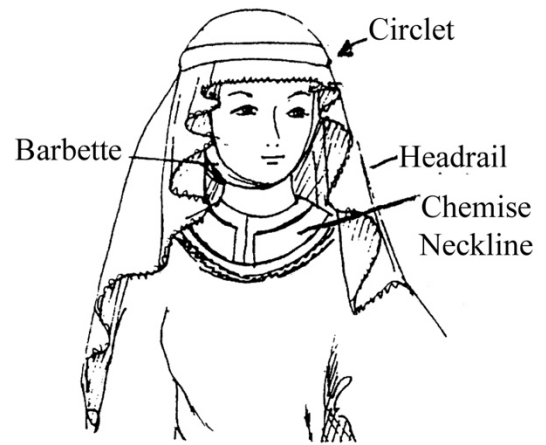
12th



Cut in 2 sections



12th & 13th Headdress



Costume History
Outline 11
Lowell

LATE MIDDLE AGES-
13th & 14th Century-GOTHIC

Historical Background

- A. Centralized Governments
- B. Commerce & Trade
- C. Middle Class/bourgeoisie
- D. Urban versus Rural
- E. Plague/Black Death
- F. Renaissance in Italy
- G. Textile production
- H. Complexity in apparel development
continues to increase: seaming, gussets
- I. Fashion Centers=Royal Courts
- J. Middle Class vs. the Nobles- Sumptuary
Laws
Exaggerations in costume:
heraldic devices
dagging

circlet

cotehardie
barbette
headrail/veil
crespinette

magyar/dolman sleeve

cote

surcote

liripipe

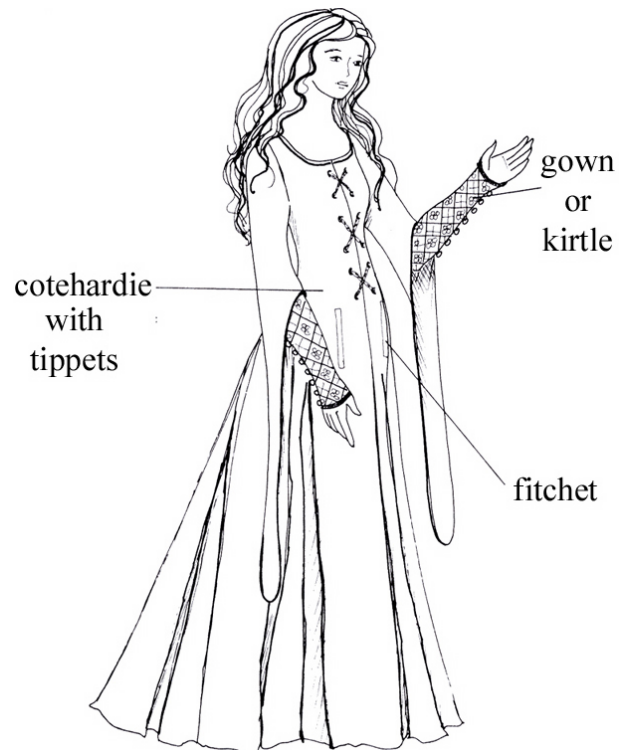
fermail/afiche

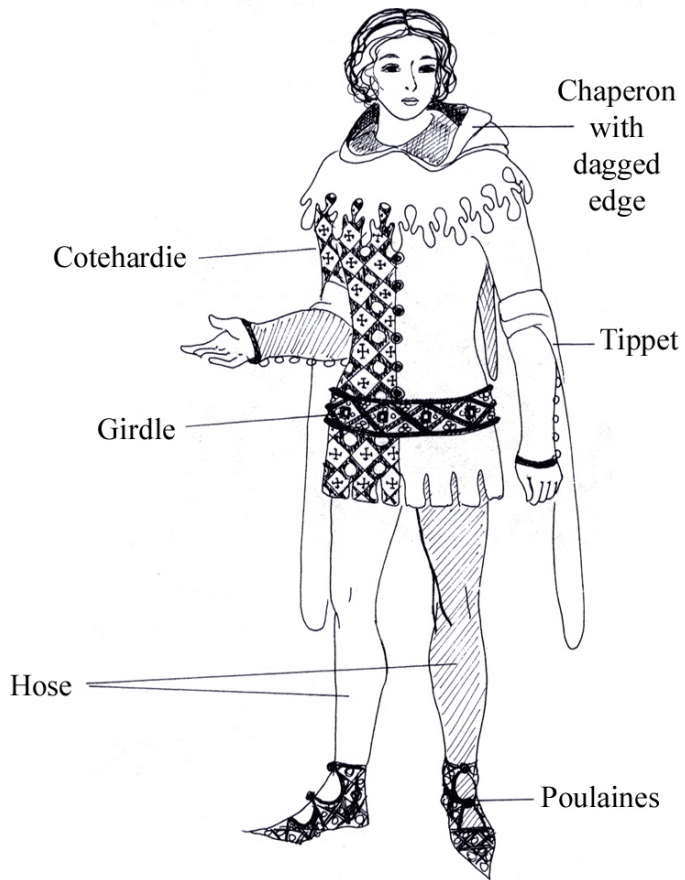
houppelande a mi jambe

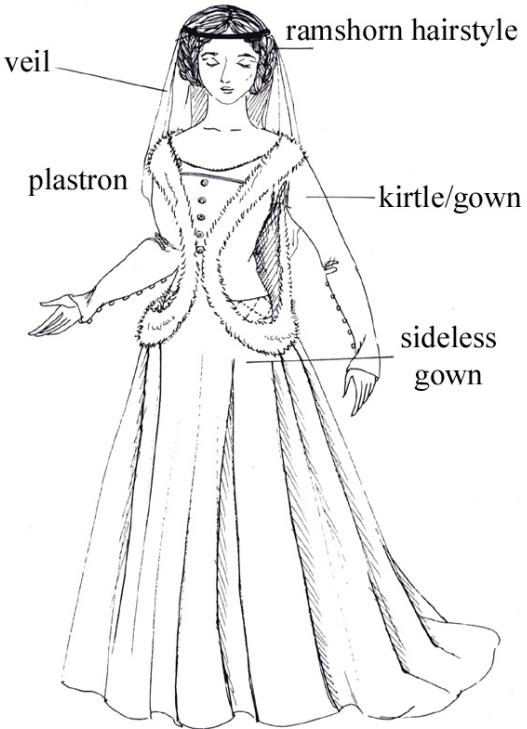
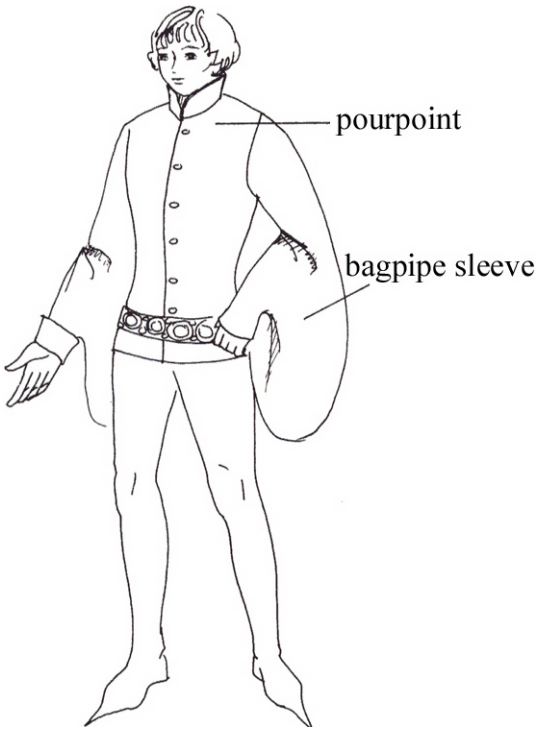
buttons
liripipes
tippets
poulaines/crackows
particolored

K. Costume

pourpoint
points
laces
chaperon
cotehardie
houppelande
tubular
pendant sleeves
bagpipe sleeves
coif
"new" chaperon
kirtle
surcote/sideless gown
plastron/placard
fitchets
brooches
ram's horn hairstyle





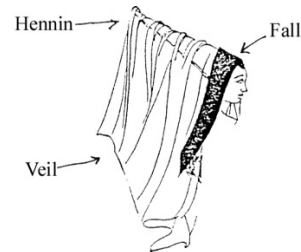
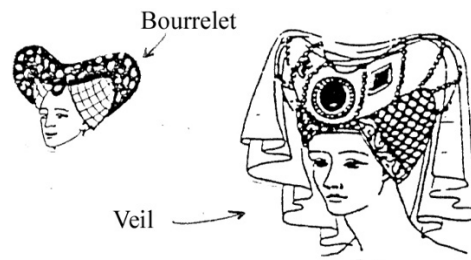


Costume History
Lowell
Outline 12

15th CENTURY-Late Gothic

Northern Europe.

- houppelande
- pendant
- dagged
- bagpipe
- carcaille
- chaperon with liripipe
- new chaperon
- parti-colored
- doublet/pourpoint
- bells
- chemise/shirt
- roundlet
- bowl cut/pudding basin
- piked shoes
- mahoitres
- pendant of the golden fleece
- points
- huque
- pattens
- ermine
- italian influence
- caul
- horned
- butterfly
- bourrelet
- heart shaped
- templers
- abdominal pads
- modesty piece
- partlet
- hennin/henin
- ermine
- frontlet
- fall
- truncated hennin
- vertugale



Horned Headdress with veil

ITALIAN RENAISSANCE-15th and 16th Centuries

- I. Renaissance Ideas
 - A. Influence of Greek and Roman artifacts
 - B. Italy's role in moving the western world out of the Middle Ages
 - C. Foundation of European structure as we know it
 - D. Important people and events
 - i. Shakespeare and Marlowe
 - ii. Columbus
 - iii. Copernicus
 - iv. Gutenberg
 - E. Social structure
 - i. Aristocracy

- ii. Merchant class
- iii. Skilled artisans and artists
- iv. Peasants & laborers

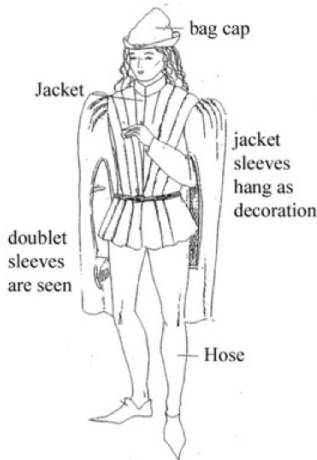
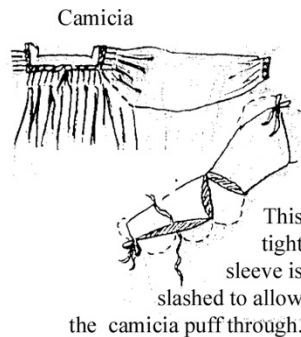
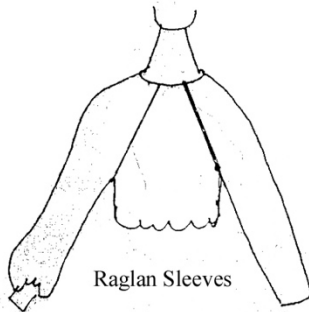
F. Textiles

II. 15th Century Costume

- guardaroba
- camicia
- doublet
- peplum
- simar
- raglan sleeve
- gown/dress
- overdress
- juliette caps
- ferroniere

III. 16th Century Costume

- black work
- chopines
- Spanish influence



Costume History

Lowell

Outline 14

NORTHERN RENAISSANCE: Tudor/Elizabethan

- I. Background Information
 - A. Protestant Reformation & Nationalism
 - 1. Germany
 - a. Martin Luther
 - 2. Spain
 - a. Charles V
 - b. Philip II
 - 3. England
 - a. Henry VII
 - b. Edward VI
 - c. Mary Tudor
 - d. Elizabeth I
 - 4. France
 - a. Francis I
 - b. Henry II & Catherine de Medici
 - B. Spread of Fashion Ideas
 - C. Textiles
 - D. Decoration
 - 1. black work- logwood
 - 2. lace
- II. Costume
 - A. Men
 - 1500-1515
 - drawers
 - shirts
 - jerkin
 - doublet
 - paltock
 - stomacher
 - jacket/jerkin
 - bases
 - robes/gowns
 - 1515-1550
 - paned
 - upper stocks/breeches
 - nether stocks
 - chamarre
 - bateau/boat neckline
 - codpiece
 - B. Women
 - 1500-1530
 - stays/pair of bodies
 - busk
 - 1530-1575
 - verdugale/Spanish farthingale
 - petticoat
 - 1575-1600
 - bum roll
 - wheel drum/French farthingale
 - ropa
 - leg of mutton sleeve
 - supportasse/underpropper
 - cartwheel ruffs
 - open ruffs/medici collars
 - conch
 - C. Accessories
 - french bonnet
 - skull caps/coifs
 - capotain
 - gabled headdress
 - French hood
 - lappets
 - attifet
 - duckbills

1550-1600

ruff
pecadils
peascod belly
breeches/ trunk hose
venetians
melon hose
gallygaskins/slops
canions
bombast

B. Women

1500-1530

stays/pair of bodies
busk

1530-1575

verdugale/Spanish farthingale
petticoat

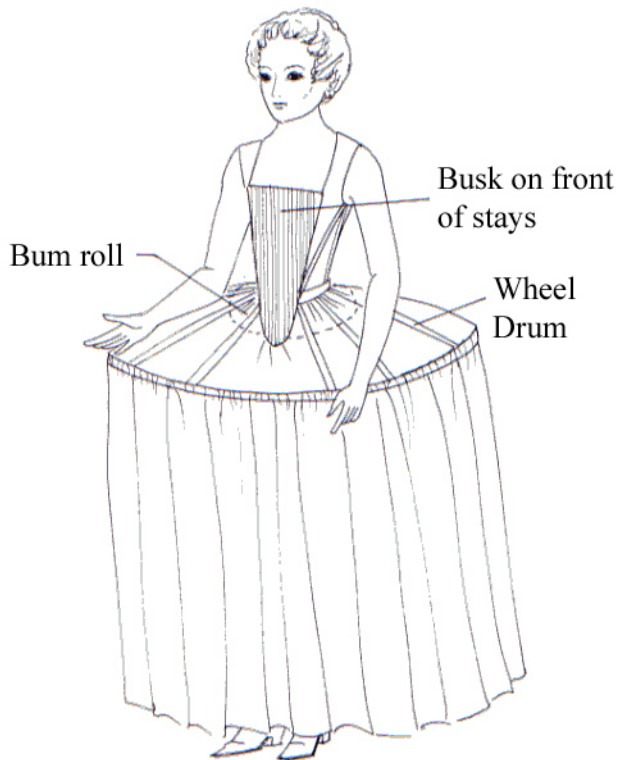
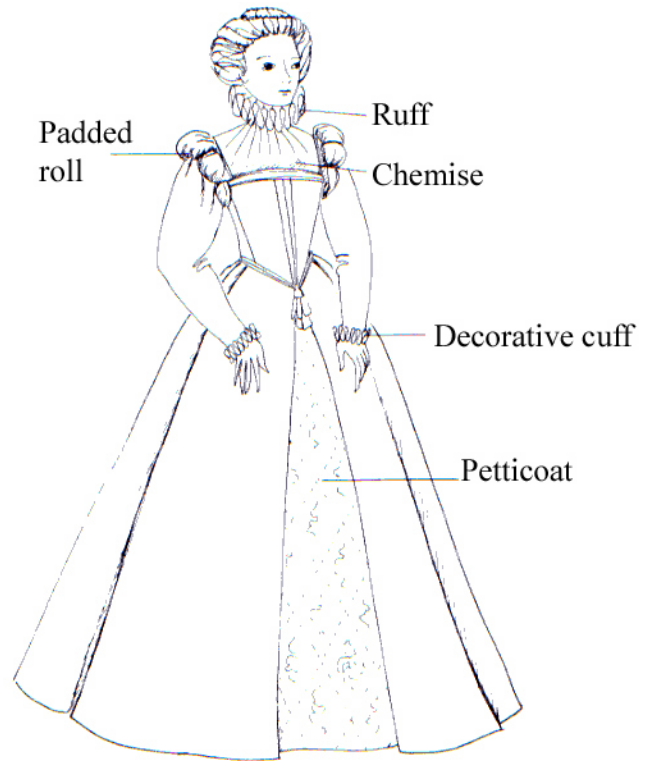
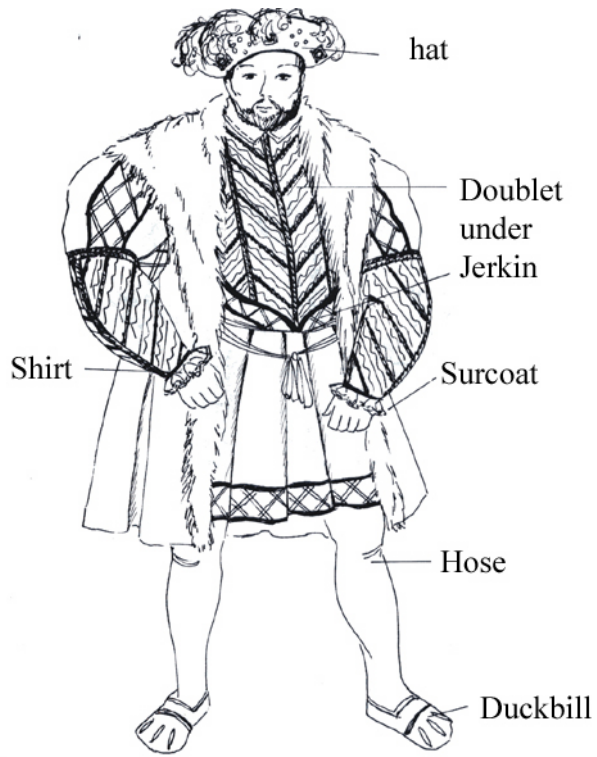
1575-1600

bum roll
wheel drum/French farthingale
ropa
leg of mutton sleeve
supportasse/underpropper
cartwheel ruffs
open ruffs/medici collars
conch

C. Accessories

french bonnet
skull caps/coifs
capotain
gabled headdress
French hood
lappets
attifet

duckbills



Costume History

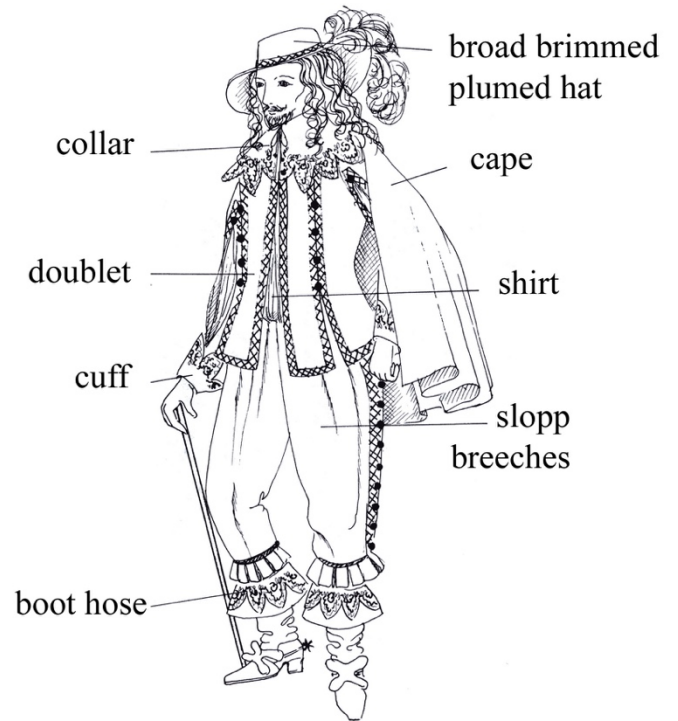
Lowell

Outline 15

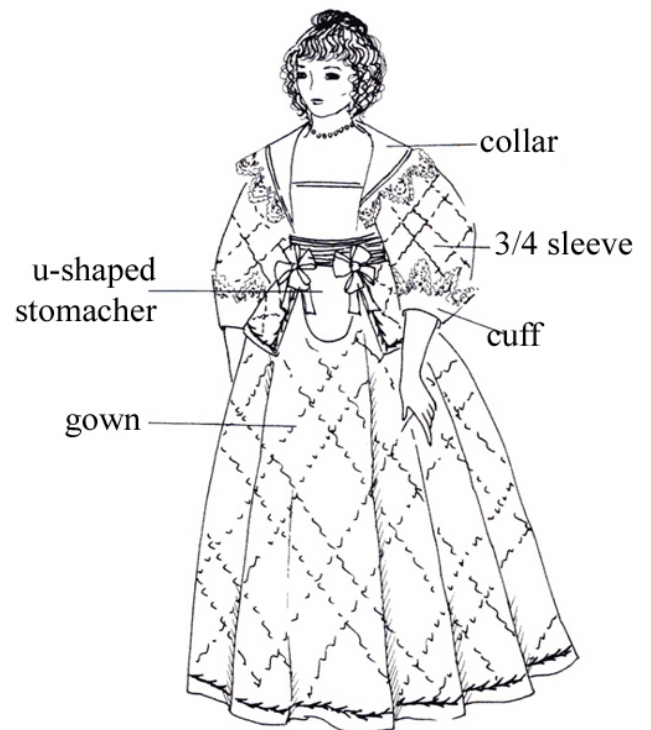
BAROQUE: Cavalier vs. Puritans

Commonwealth & Restoration

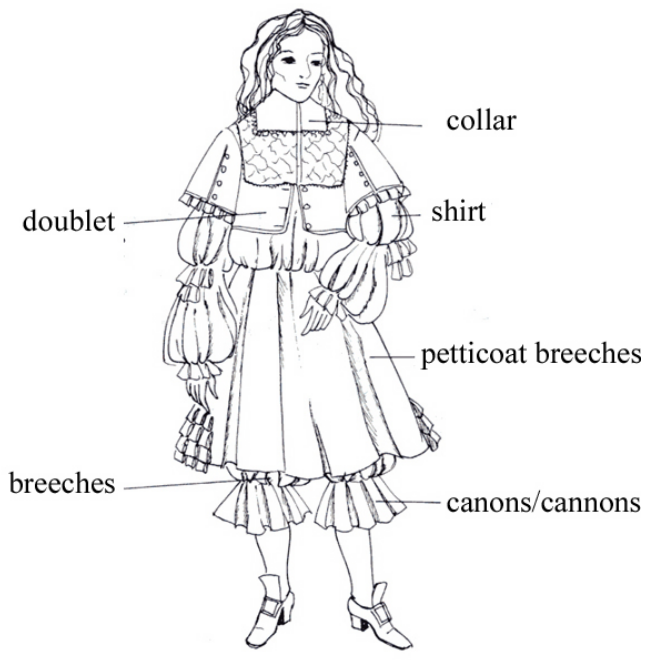
- whisk
- falling band/falling ruff
- slop
- Balagny cloaks
- cassocks/casaques
- love lock
- straight soles
- slap shoes
- modeste
- secret
- basques
- virago sleeves
- dishabille
- cravat
- petticoat breeches/rhinegraves
- canons/cannons
- surtouts/justacorps
- tricorn
- jack boots
- corset
- fontage/commode
- pantofles
- fans
- wigs
- muffs
- masks
- pomander balls
- patches
- plumpers
- capotains
- mantilla
- guardinfante
- mantua/manteau
- fichu
- boot hose



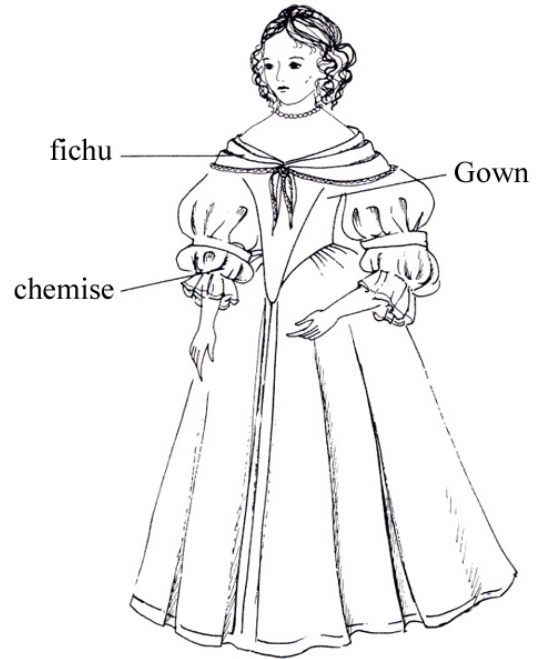
Early Commonwealth



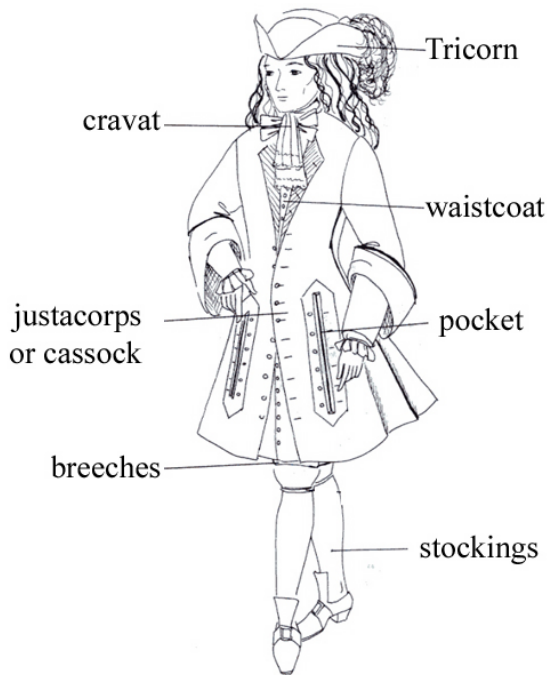
Commonwealth



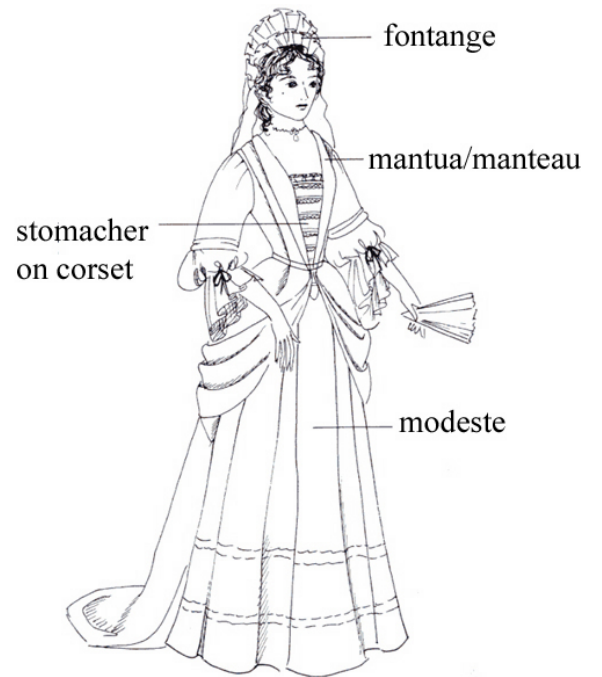
Restoration



Restoration



Late 17th Century (post 1680)



Late 17th Century (post 1680)

Costume History

Lowell

Outline 16

Eighteenth Century-Rococo/Georgian

Undress

Dress

Full dress

Powdering jacket

Half dress

Morning dress

Habit

Great coat

Beau/coxcomb/fop

Macaronis

Anglomania

redingotes

steinkirk

buckram

boot cuffs

frock coat

fall front

ditto suits

stocks

solitaire

banyan

full bottomed wig

toupee/foretop

queues

pigeon wings

club wig/catogan

bag wig

bob wig

natural wig

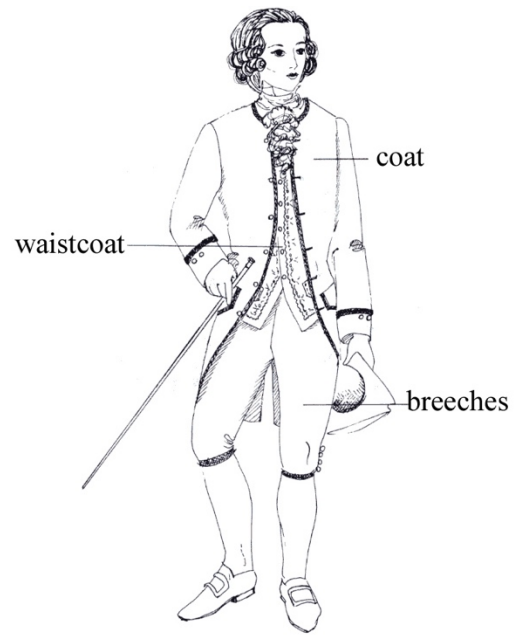
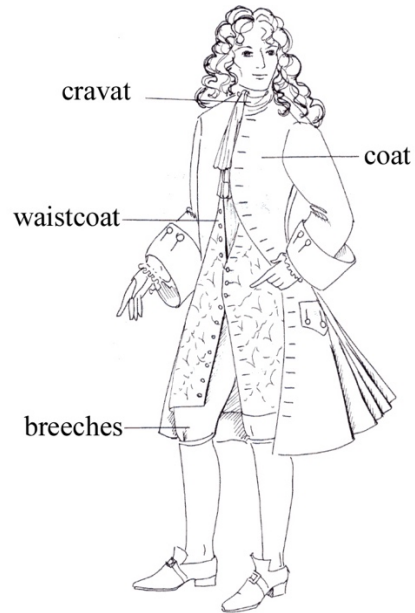
tricornes

bicornes

chapeau bras

clocking/clocks

spatterdashers/spats



Costume History

Lowell

Outline 17

Rococo Women-Eighteenth Century

paniers

under petticoat

jumps

hoops

sacque gown/robe battante/robe volante/innocente

pet-en-lair

puffers

mob caps

collarets

ellipse silhouette

robe a la Francaise

robe a la Anglaise

fichu

eschelles

engageants

caracao/casaquin

Bergere/shepardess hat

false rump

Polonaise

redingote dress

chemise a la reine

hedgehog

calashe

